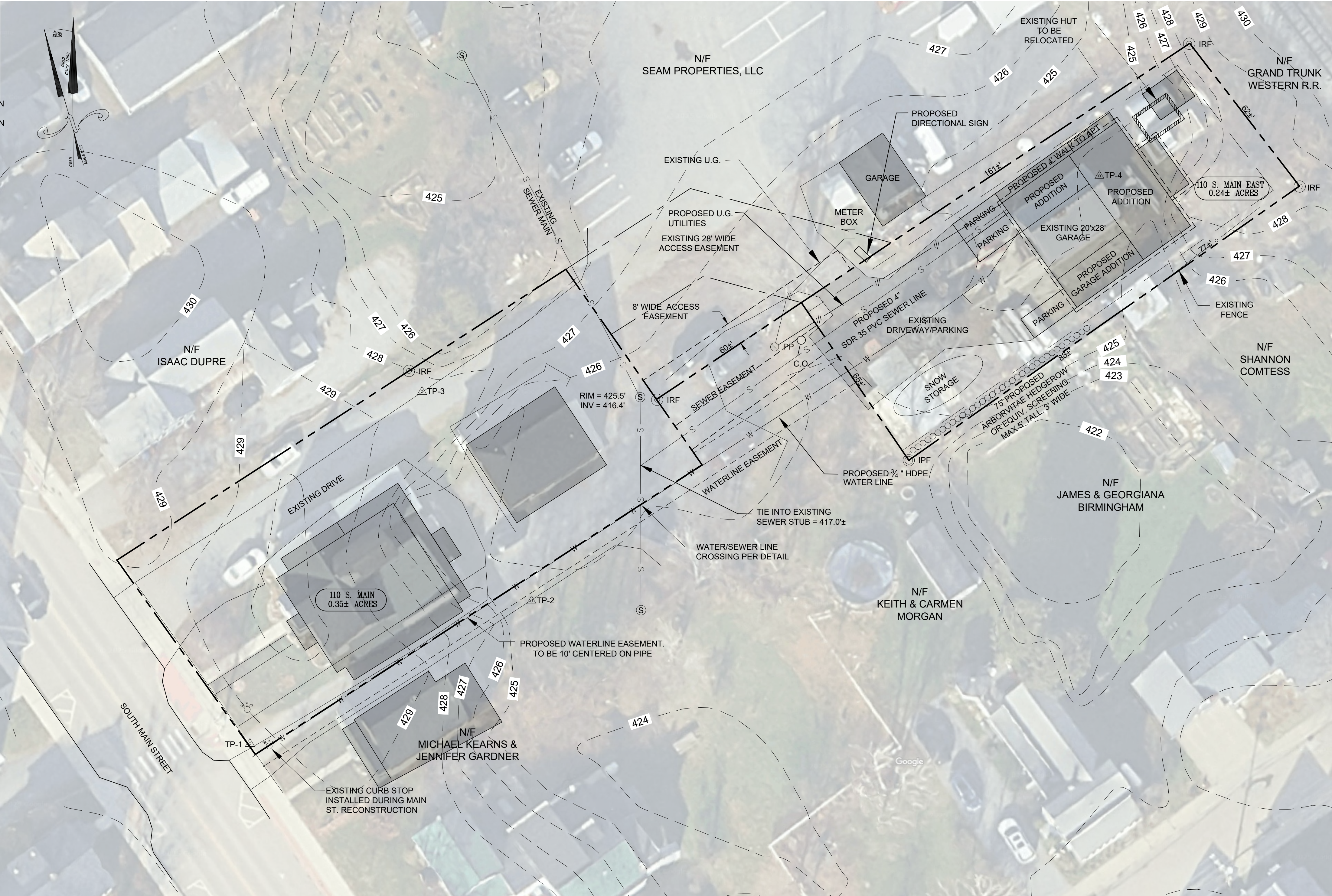


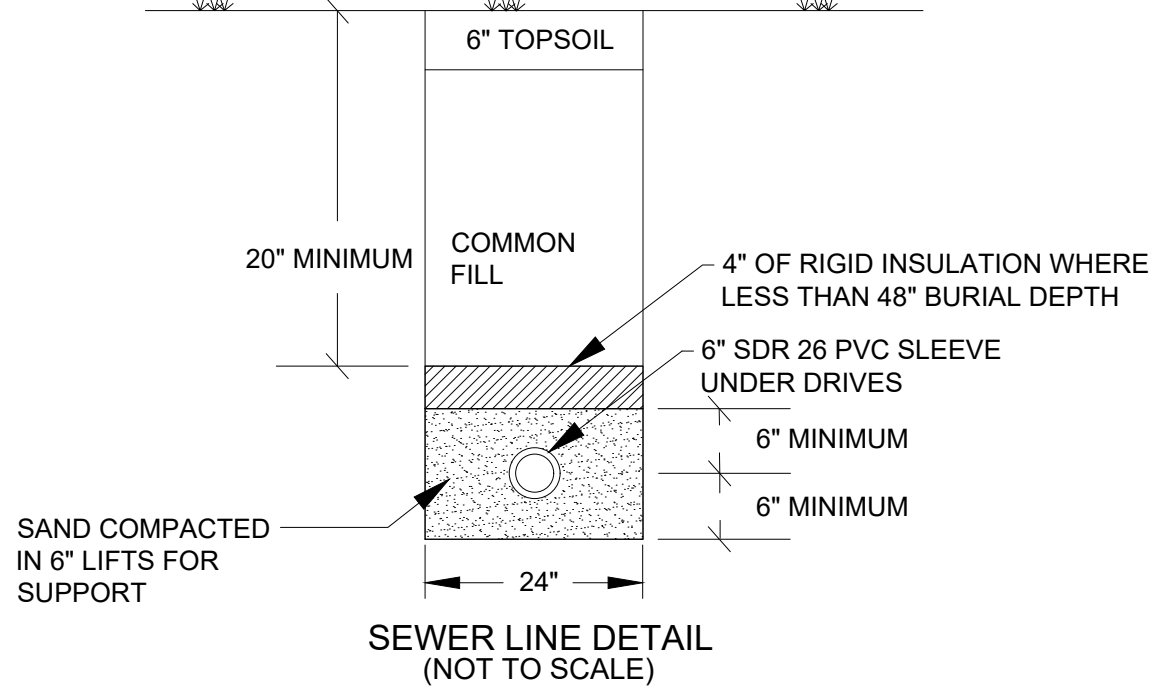
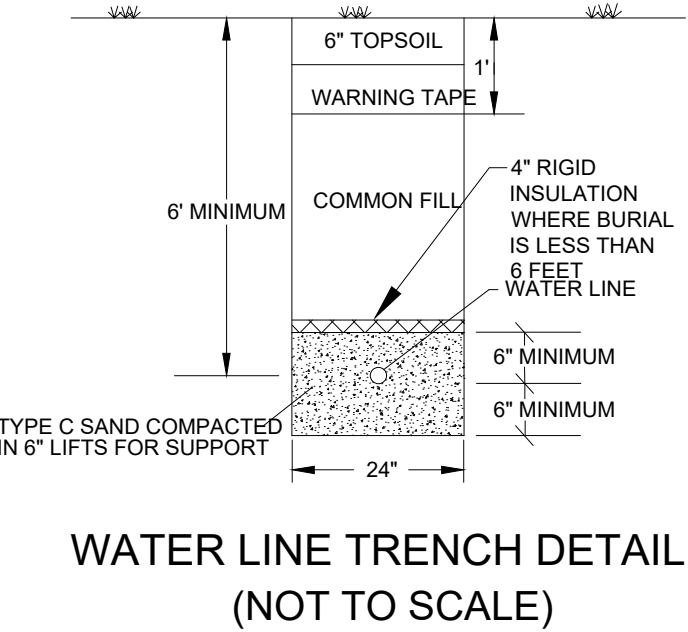
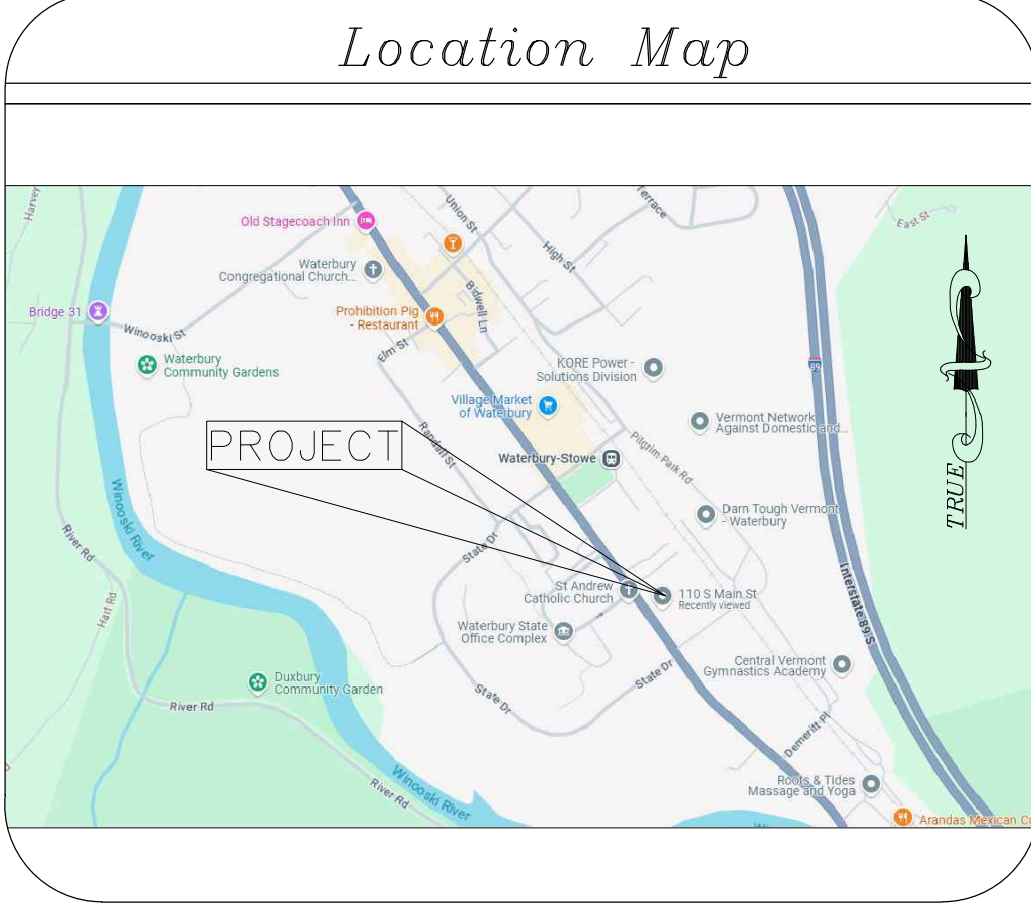
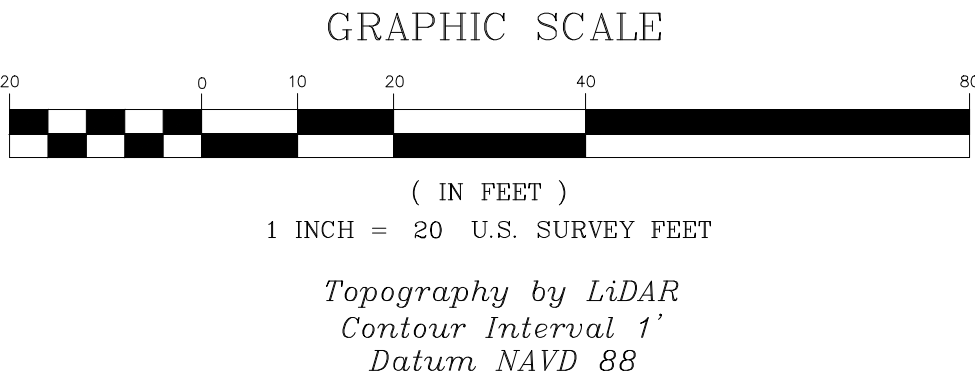
Setbacks: The following are general setback distances that must be met unless otherwise authorized by the permitting authority and/or the consultant. This list does not necessarily include all required setback distances and the listed setback distances may not apply to all sites:

ITEM	LEACHFIELD	SEPTIC TANK	SEWER
DRILLED WELL	SEE PLAN	50'	50'
SPRING	SEE PLAN	75'	75'
LAKES, PONDS, IMPOUNDMENTS	50'	25'	25'
RIVERS, STREAMS	50'	25'	10'
PROPERTY LINE	25'	10'	10'
ROADWAY, DRIVEWAY, PARKING LOTS	10'	5'	SEE PLAN
TREES	10'	10'	10'
SERVICE WATER LINE	25'	25'	SEE PLAN

- NOTES:
- Sewer & Water Basis of Design (connection to Waterbury municipal systems):
- Design Flow: (1) 2-Bedroom apartment and (1) 1-Bedroom apartment @ 140 gpd/BR = 420 gpd
- Inspections and Certifications:
- 1) The septic system installer will provide the consultant with a signed and dated statement as follows:
- "I hereby certify that the installation-related information submitted is true and correct, and that in the exercise of my reasonable professional judgment, the wastewater system has been installed in accordance with the permitted design and all permit conditions, was inspected, was properly tested, and has successfully met those performance tests.
- 2) The water system installer will provide the consultant with a signed and dated statement as follows:
- "I hereby certify that the installation-related information submitted is true and correct, and that in the exercise of my reasonable professional judgment, the potable water supply has been installed in accordance with the permitted design and all permit conditions, was inspected, was properly tested, and has successfully met those performance tests.
- 3) The certification of construction as required by section 1-311(b) of the Environmental Protection Rules may not be provided by the designer if the procedures outlined herein are not followed.



- LEGEND
- TP-1: Traverse point
 - IPF: Iron pipe found
 - IRF: Iron rod found
 - Water shut off valve
 - S: Sewer manhole
 - 4" Clean Out
 - Property line
 - Right-of-way
 - Water/sewer easement
 - S: Sewer line
 - W: Water line
 - Fence
 - Underground power
 - 1" contours



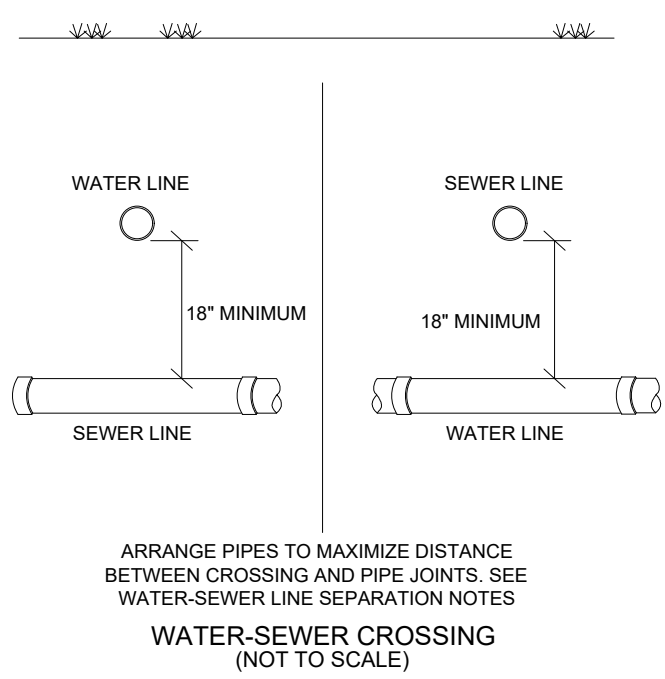
WATER-SEWER LINE SEPARATION NOTES

A. Horizontal Separation:

1. Sewers shall be laid at least ten feet horizontally from any existing or proposed water main. The distance shall be measured edge to edge.
2. Where impossible or impractical, due to ledge, boulders or other unusual conditions, to maintain the ten foot sewer-water pipe horizontal separation between sewer and water lines, the water line may be in a separate trench or on an undisturbed earth shelf in the sewer trench provided that the bottom of the water line is at least 18 inches above the top of the sewer. Wherever impossible or impractical to maintain the 18 inch vertical separation, the sewer line shall be constructed to normal water line standards and pressure tested to 50 psi for 2 hours prior to backfilling. No leakage shall be allowed for this test.

B. Crossings:

1. Sewer crossing water mains shall be laid beneath the water main with at least 18 inches vertical clearance between the outside of the sewer and the outside of the water main.
2. When it is impossible to maintain the 18 inch vertical separation, the crossing shall be arranged so that one full length of sewer pipe is centered above or below the water line with sewer joints as far as possible from water joints.
3. The sewer pipe must be constructed to the water main standards for a minimum distance of 20 feet either side of the crossing or a total of three pipe lengths, whichever is greater.
4. The section constructed to water main standards must be pressure tested to maintain 50 psi for 2 hours without leakage prior to backfilling beyond one foot above the pipe to verify water tightness.
5. Where a water main crosses under a sewer, adequate structural support shall be provided for the sewer to prevent damage to the water main, and the joints of the sewer line shall be encased in concrete.



PROJECT NO. 37008A

OWNER OF RECORD: Brian Touchette

ACREAGE: 0.65 AC

SPAN: 696-221-11850

PARCEL NO.: 916-0110.V

BOOK/PAGE: 401-135

ZONING DISTRICT: Mixed Use/VBR

REVISIONS

11/11/25 PLAN UPDATES PER DRB REVIEW, MISC.

SITE PLAN

BRIAN TOUCHETTE

PROPOSED MULTI-FAMILY ADDITION

110 SOUTH MAIN STRET WATERBURY, VT

SCALE : 1" = 20'

DESIGNED BY: GMJr PROJECT #37008A

DRAWN BY: SJH / WDB

CHECKED BY: GMJr

McCAIN CONSULTING, INC.

93 SOUTH MAIN STREET

WATERBURY, VERMONT 05676

DATE: SEPTEMBER 1, 2025 SHEET C-1



NOTE:

CONTRACTOR TO CONTACT DIG-SAFE AND VERIFY THE LOCATION OF ALL UTILITIES PRIOR TO CONSTRUCTION.

THE CONTRACTOR SHALL REVIEW ALL CONSTRUCTION ACTIVITIES, COMPONENT LOCATIONS, SPECIFICATIONS, AND DETAILS PRIOR TO COMMENCEMENT OF SITE WORK AND SHALL NOTIFY MCCAIN CONSULTING OF ANY ISSUES OR DISCREPANCIES THAT ARISE FROM THAT REVIEW.

THIS IS NOT A SURVEY. THIS PLAN DOES NOT MEET THE REQUIREMENTS OF 27 VSA SEC. 1403 FOR THE FILING OF SURVEY PLATS.

PRELIMINARY

NOT FOR CONSTRUCTION

ENGINEER:

GEORGE N. MCCAIN JR., P.E.

VT P.E. 92506

Y:\Cadd\37000\3\37008A\dwg\37008A 20251111.dwg

PROPOSED SHOP ADDITION
112 SO. MAIN ST. 1-BEDROOM & EFFICIENCY
1/4" = 1'0"
WEST ELEVATION



PROPOSED SHOP ADDITION
112 SO. MAIN ST. 1 BEDROOM & EFFICIENCY
1/4" = 1' 0"
NORTH ELEVATION



PROPOSED SHOP ADDITION

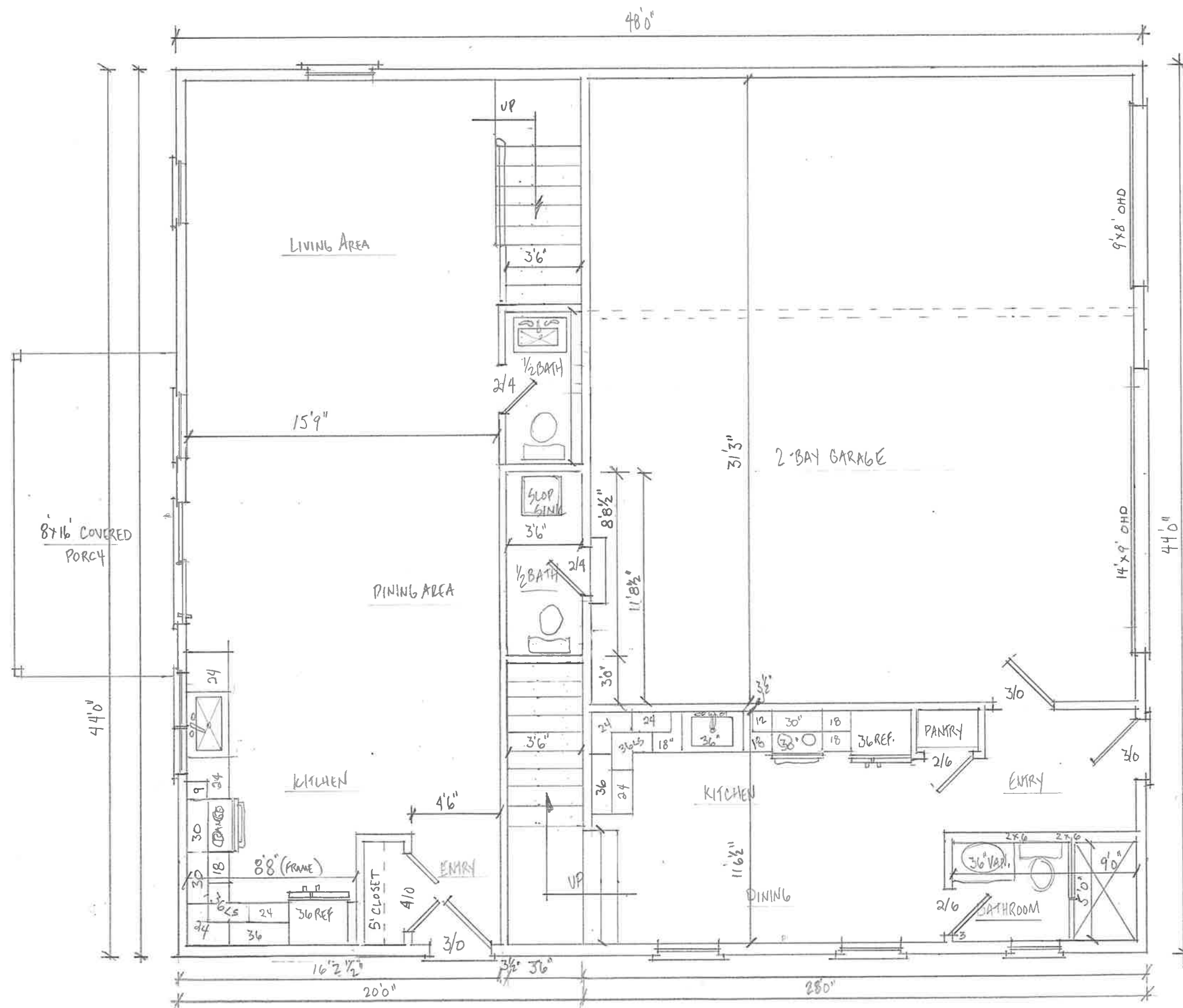
112 SO. MAIN ST. 1-BEDROOM & EFFICIENCY

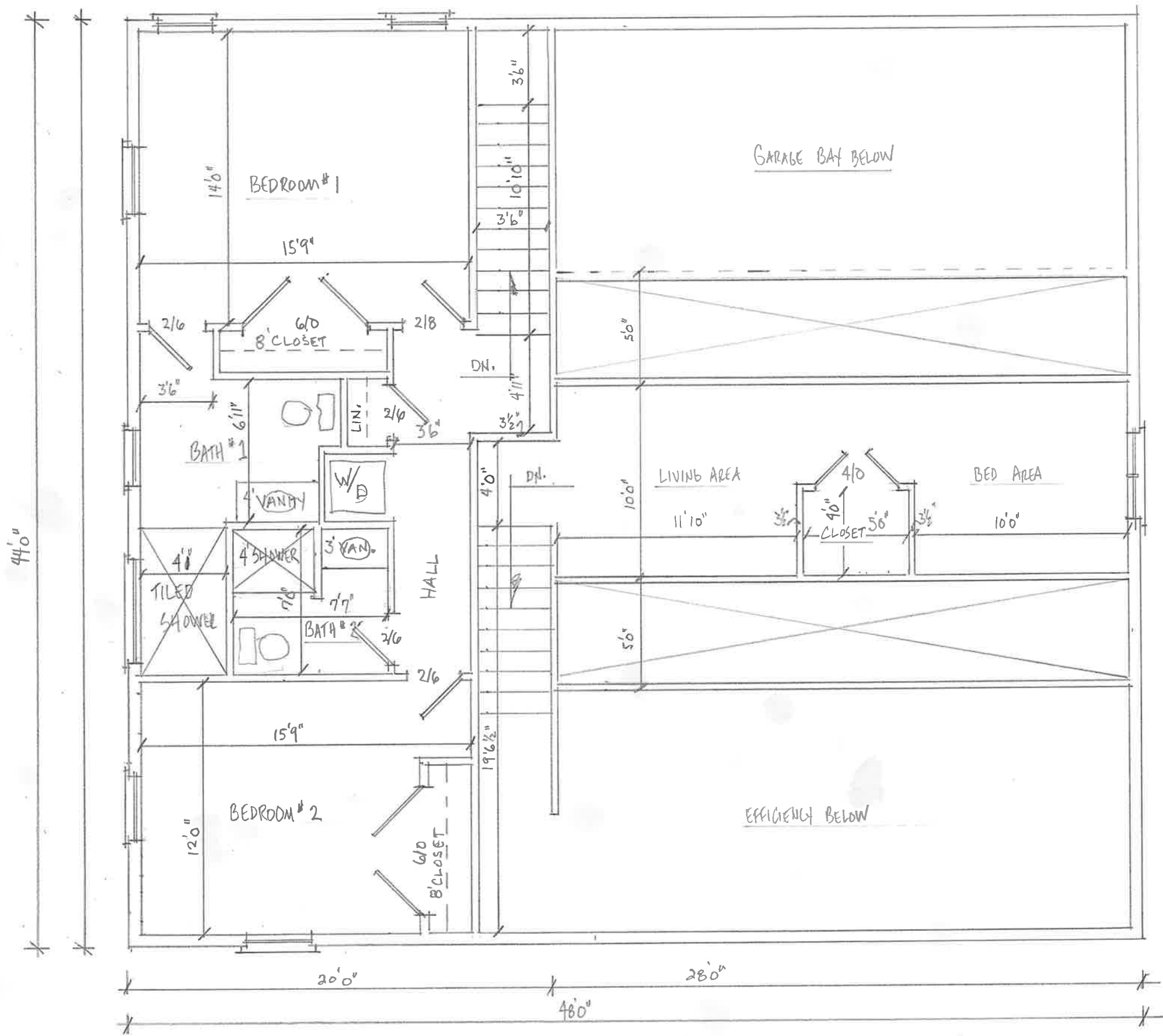
1/4" = 1'0"

SOUTH ELEVATION



1st FLOOR PLAN







The choice is yours...



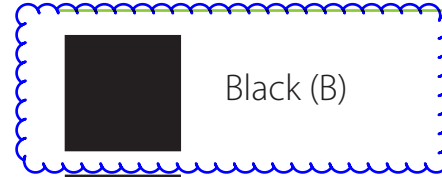
RAB[®]
LIGHTING
RABWEB.COM • 888 722-1000

...in new Signature colors!

- 13 and 26 Watt high-performance LEDs
- Available in 11 high-durability powder coatings, formulated for long-lasting color
- Choose from 5 different arms and 6 shades
- Standard (12-14 weeks) delivery
- Reduces relamping time and costs
- 13W replaces 75W incandescent, 50W MH or 18W CFL
- 26W replaces 120W incandescent, 75W MH or 42W CFL
- 100,000-Hour LED lifespan
- 5-Year no-compromise warranty



Classic Colors



Black (B)



Architectural Bronze (A)



White (W)

Signature Colors



Red (R)



Yellow (YL)



Light Blue (LB)



Royal Blue (BL)



Brown (BWN)



Ivory (I)



Hunter Green (G)



Metallic Silver (S)

Contact your local RAB rep to view actual sample color chips.

Individual components

LED Heads

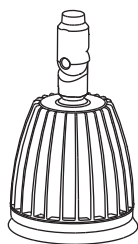
GNLED13

13W LED Head

GNLED26

26W LED Head

(available in warm and neutral)



Gooseneck Arms

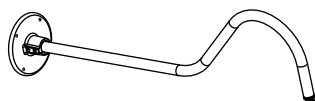
GOOSE1

Gooseneck 24" Arm



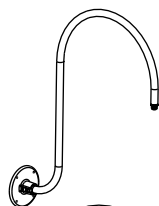
GOOSE2

Gooseneck 35" Arm



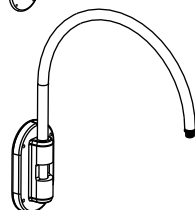
GOOSE3

Gooseneck 30" Arm



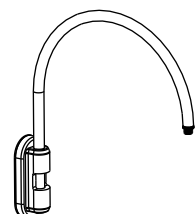
GOOSE4

Gooseneck 20" Arm



GOOSE5

Gooseneck 20" Arm
w/Pole Mount



Shades

GSAC

15" Angled Cone Shade

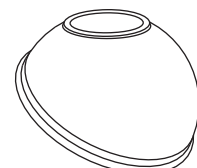


GSAC11

11" Angled Cone Shade

GSAD

15" Angled Dome Shade



GSAD11

11" Angled Dome Shade

GSST

15" Straight Shade



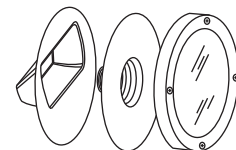
GSST11

11" Straight Shade

Accessories

LRFGNLED

Clear Lens & Reflector Kit
w/Door Frame



LFGNLED

Frosted Lens & Door Frame
Replacement



Ordering information

Product Family	Arm	Wattage	Color Temp	Reflector	Shade	Color
GN		LED				
Blank	No arm	13 13W	N Neutral (4000K)	Blank Flood reflector + frosted lens	Blank No shade	B Black
1	GOOSE1	26 26W	Y Warm (3000K)	S Spot reflector + clear lens	AC 15" Angled cone	W White
2	GOOSE2			R Rectangular reflector + clear lens	AC11 11" Angled cone	A Architectural Bronze
3	GOOSE3				AD 15" Angled dome	S Metallic Silver
4	GOOSE4				AD11 11" Angled dome	G Hunter Green
5	GOOSE5				ST 15" Straight shade	YL Yellow
					ST11 11" Straight shade	R Red
						LB Light Blue
						BL Royal Blue
						BWN Brown
						I Ivory

Specifications

UL Listing

Suitable for wet locations. Suitable for mounting within 4' of the ground.

LED

Multi-chip, high-output, long-life LED

Drivers

13W: Constant Current, Class 2, 50/60 Hz, 100 - 240VAC: 0.3 - 0.15A, 277VAC: 0.15A, THD \leq 20%, PF 97.5%

26W: Constant Current, Class 2, 50/60 Hz, 0.48 A, THD \leq 20%, PF 97.9%

Angled Cone Shade, White Finish, Neutral Light

Nominal Watts	13W	26W
Input Watts @ 120V	15.4	28.9
Output Lumens*	705	1673
Lumens per Watt*	45.8	57.9
Color Accuracy (CRI)*	86	84
Correlated Color Temp. (Nominal CCT)*	4000K	4000K

Cold Weather Starting

Minimum starting temperature is -40°F / -40°C

Thermal Management

Custom heat sink assembly in thermal contact with die-cast aluminum housing for superior heat sinking

Housing

Precision die-cast aluminum housing, lens frame and mounting plate

Reflector

Optional rectangular or spot reflectors available

Gaskets

High-temperature silicone

Mounting

Heavy-duty mounting arm with "O" ring seal & stainless steel screw

Shades

Angled Cone, Angled Dome or Straight Shade offered in both 11" and 15'

Paint Finish

Chip and fade resistant polyester powder coat finish. Offers significantly improved gloss retention and resistance to color change.

Color Stability

RAB LEDs exceed industry standards for chromatic stability

Color Uniformity

RAB's range of CCT (Correlated Color Temperature) follows the guidelines of the American National Standard for Specifications for the Chromaticity of Solid State Lighting (SSL) Products, ANSI C78.377-2011.

IESNA LM-79 & LM-80 Testing

RAB LED luminaires have been tested by an independent laboratory in accordance with IESNA LM-79 and LM-80, and have received the Department of Energy "Lighting Facts" label.

California Title 24

Goosenecks comply with 2013 California Title 24 building and electrical codes as commercial, outdoor, non-pole-mounted fixtures < 30 Watts when used with a photosensor control. Select catalog number PCS900 (120V) or PCS900/277 to order a photosensor.

Green Technology

Mercury and UV free, and RoHS compliant. Powder coat finish formulated with an environmentally friendly, TGIC-free (Triglycidyl Isocyanurate) process.

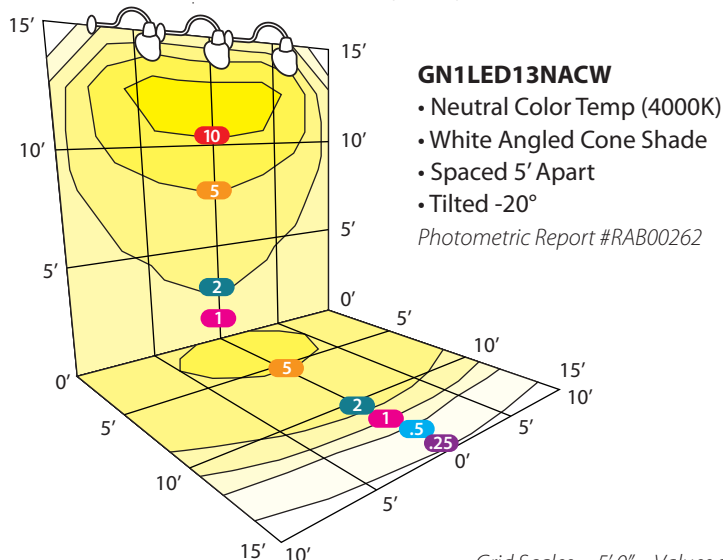
Patents

The design of the GNLED is protected by patents pending in US, Canada, China, Taiwan and Mexico.

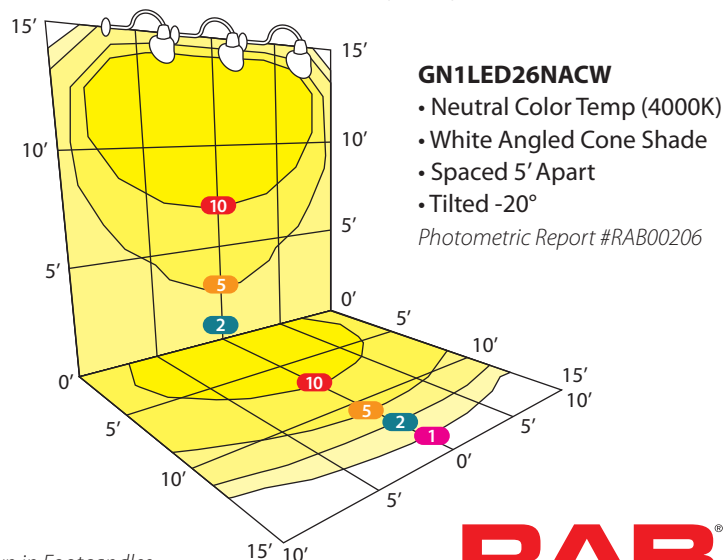
* Please visit rabweb.com for details on warm temperature performance.

Photometrics

Three 13W LEDs at 15' Mounting Height



Three 26W LEDs at 15' Mounting Height



Grid Scales = 5' 0" - Values shown in Footcandles