

What's Happening Behind the Fence?

Deconstruction:

The final phase (6 buildings) will occur next year when the new central plant is in operation.

Sitework:

Water, sanitary, storm drainage, heating and cooling piping and electrical work is being installed both along the west and east sides of the Historic Core buildings.

Historic Core:

The selective demolition process continues on the interior of the Historic Core. Existing mechanical and electrical systems have been removed and structural framing improvements are underway. The flood proofing of the lower level continues with the placement of the concrete low strength material (CLSM) fill to be ready for the new first floor slab on grade!

New Office Building:

The new concrete footings and frost walls for the New Office Building foundation are complete. The crane boom towering above the Historic Core is used to set the new structural steel framework in place for the NOB which is well underway at this time.

Central Plant:

The concrete footings and frost walls for the exterior walls have been formed and placed for the new Central Plant in anticipation of the structural steel framework beginning in the coming weeks.

Safety:

It is a large site, so please be aware of changing conditions!

Panoramic view (looking North) at NOB Steel, Historic Core-South Buildings, Hanks, Weeks, DPS / Forensics and the New Plant!



CONSTRUCTION

Check us out online!

<http://bgs.vermont.gov/FutureUseWaterbury>

Have Questions?

Reach us by E-mail:

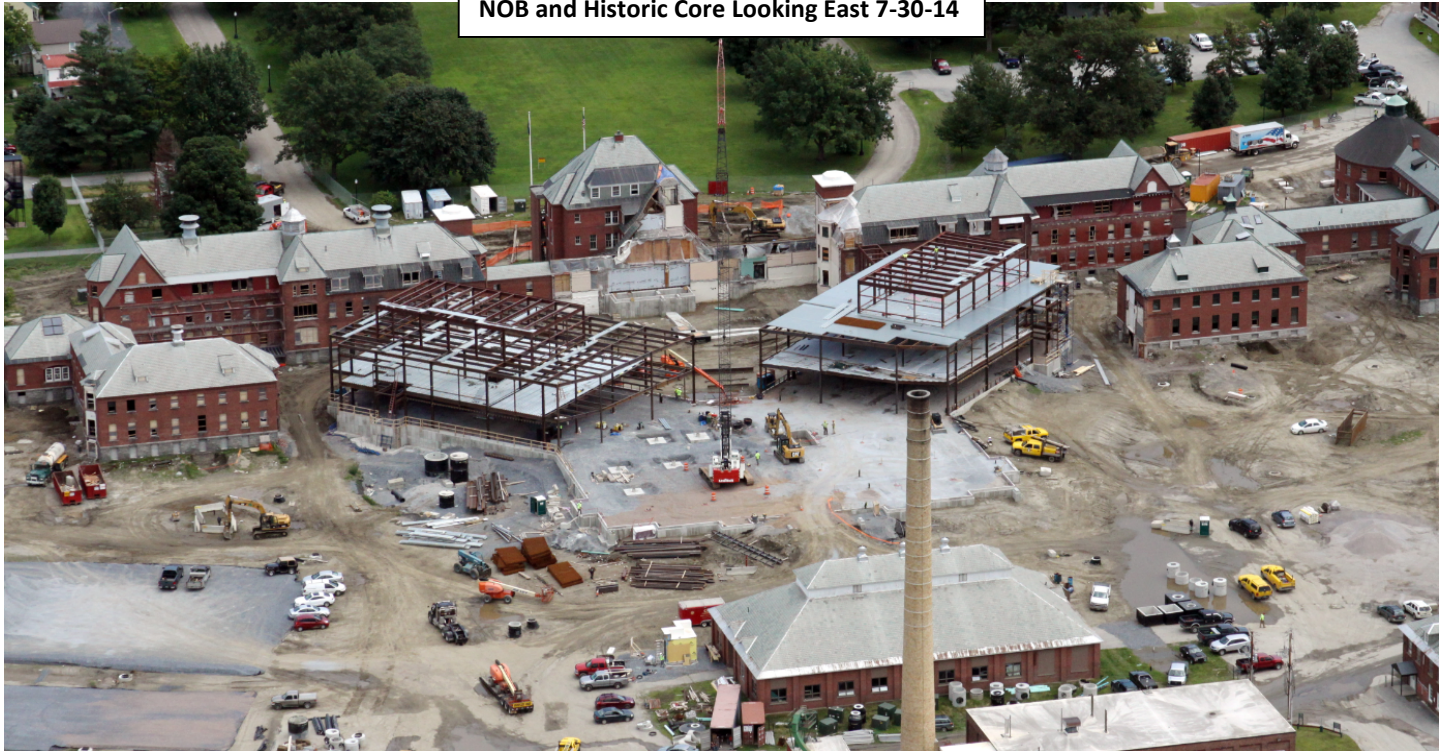
bgs.wsocetam@state.vt.us



PROJECT VIEWS

JULY 31, 2014

NOB and Historic Core Looking East 7-30-14



Weeks, Hanks, Historic Core and NOB Looking South 7-30-14

