

DISCOVER

Waterbury

VERMONT



DISCOVERWATERBURY.COM

Waterbury VERMONT

*Gateway to an
Uncommon Vermont*

Waterbury is centrally located at Exit 10 off I-89, the state's major north-south highway that winds along the spine of the Green Mountains. Route 100, dubbed "The Skiers' Highway" as well as one of the most scenic drives in Vermont, threads through our region. The Mad River Byway and the Green Mountain Byway converge on our doorstep. The ski and summer resorts of Stowe, Bolton, Sugarbush, and Mad River Glen are readily accessed, and we are less than 30 minutes from Montpelier, Stowe, and Burlington.

We are a place of uncommon adventure, not only close to four renowned mountain resorts, but surrounded by a natural environment that is a dynamic backdrop for outdoor activities.



JOCELYN HEBERT

Visit Waterbury and you will see that we are a place of uncommon dining, where people connect over locally sourced cuisine and refreshments, while reconnecting with the flavors of life in Vermont.

We are a place of uncommon accommodations and events. We unite in shared purpose: to provide a setting that inspires the heart and opens the mind. We invite you to Waterbury, uncommonly Vermont.

CONTENTS

SEE & DO	4
AREA BEER & BREWERIES	14
EAT & DRINK	16
MAP	20
STAY & VISIT	26
CALENDAR OF EVENTS	36
WEDDINGS & EVENTS	37

Produced by Revitalizing Waterbury

PO Box 473, Waterbury, VT 05676 • info@DiscoverWaterbury.com

Cover photo credits: Brooks Curran, Heather Glenn-Arvads Grill, Bolton Valley Ski Resort, Ben & Jerry's
June 2017, Q 20k.



39 DRAFTS

VT COMFORT FOOD ★ FULL SPORTS BAR

OUTDOOR SEATING ★ PRIVATE EVENT SPACE

LIVE MUSIC ★ APRÈS SKI

Serving dinner 7 days a week

Lunch Saturday & Sunday with Brunch 11-2pm

View our full Menu online: waterburyreservoir.com

Instagram: REZVT Facebook: THE RESERVOIR

1 SOUTH MAIN STREET ★ 802.244.7827



*From Mountain High to Low Gear:
Playing, Touring, and Shopping in Waterbury*
FUN IS AN (UN)COMMON OCCURRENCE

It's common knowledge that Vermont is year-round ground for adventure. It's (un)common knowledge that in Waterbury, unrivaled recreation, touring, attractions, and shopping are all right here at our fingertips.

Our playground includes the peaks, valleys, and rivers of the Green Mountains. From winter's mountain snow to the soothing green of warmer climes, our culture and people are naturally active. Ski or ride hundreds of miles of powder-packed terrain at Stowe Mountain Resort, Sugarbush, Bolton Valley, and Mad River Glen, all within fifteen miles of Waterbury. If the backcountry beckons, Nordic skiing, snowshoeing, snowmobiling, dog sledding, ice skating and even sleigh rides comprise the winter activities roster.



JUSTIN CASH, BOLTON VALLEY RESORT

As the days grow longer, the forests transform into trail networks for all levels of cycling. Pack your backpack and summit two of the highest peaks in the Green Mountains, Camel's Hump and Mount Mansfield. Swim in the Waterbury Reservoir or Winooski River; rent some gear and try your hand at canoeing, kayaking, stand-up paddleboarding, and fishing.

If you would like to spend your day in a lower gear, take a scenic driving tour connecting the Mad River and Green Mountain Byways. Sites include granite-edged mountains, valleys, farms, covered bridges, and historic villages with a mix of preserved past and contemporary culture.



MATT BRUHNS, WTC



COLD HOLLOW CIDER MILL



Waterbury's nearby attractions mirror Vermonters' cutting-edge grasp on the homegrown and whimsical. Watch ice cream and cider materialize from raw products at Ben & Jerry's Ice Cream and Cold Hollow Cider Mill, and discover why these businesses are pioneers in the international specialty food industry. Sample and shop fresh Vermont-made products at Lake Champlain Chocolates and the Cabot Creamery store; take in the story of the beans before you stock up at Green Mountain Coffee.

In Waterbury Village, browse locally owned boutiques sure to have something for everyone. In warmer weather, farmers, crafters, and chefs gather weekly to display a variety of crisp produce, natural meats, maple creations, and eclectic gifts at the farmers market. End the day on the town (un)common with complimentary open-air performances from some of Vermont's best known musicians.

**ON THE CORNER OF TRIUMPH AND
DELIGHT: PLAYING, TOURING,
AND SHOPPING WATERBURY**

Join us for an afternoon or for a week. From a village stroll to all-out exhilaration, you'll find fun in Waterbury, uncommonly Vermont.



DENNIS CURRAN



SEE & DO

BEN & JERRY'S FACTORY TOUR

1281 Waterbury-Stowe Road, Waterbury, VT 05676

866-258-6877, benjerry.com/about-us/factory-tours

Experience our fun, educational guided factory tour! 30 minutes includes a company history movie, view of production room, explanation of process, and a sample. Production schedule varies. Scoop and gift shops. Handicapped accessible. Open year round. Closed Christmas, New Years, and Thanksgiving. \$4 adults, \$3 Seniors, 12 and under free.

BOYDEN VALLEY WINERY & SPIRITS

3600 Waterbury-Stowe Road, Waterbury Center, VT 05677

802-241-3674, boydenvalley.com

Experience Vermont's award-winning Winery, Cidery, and Distillery. Crafting a variety of wines, ciders, and spirits including VERMONT ICE, using sustainable agriculture and supporting local farms. Enjoy tastings at our Tasting Annex at Cold Hollow Cider Mill or visit our Winery in Cambridge (802-644-8151) for tastings, free tours, and seasonal gourmet cheese plates. Visit our website for hours and tour times.

BEN & JERRY'S
FACTORY TOUR!
Bring the whole herd!

Tours Daily
Scoop Shop & Gift Shop

1281 Waterbury-Stowe Rd. • 1-866-BJ-TOURS • benjerry.com

22590 © Ben & Jerry's Homemade, Inc. 2017. Cow © Woody Jackson 1997

BRIDGESIDE BOOKS

29 Stowe Street, Waterbury, VT 05677

802-244-1441, bridgesidebooks.com

Bridgeside Books is the quintessential local bookstore in the heart of Waterbury, Vermont. Our store is that place for you to begin your next adventure, a place of learning and a place to let your imagination wander. Take a stroll down Stowe Street in historic downtown Waterbury and make your next discovery with us at Bridgeside Books.

WINERY | CIDERY | DISTILLERY



EXPERIENCE THE MANY FLAVORS OF VERMONT



Taste our Award-Winning Wines, Ciders, and Spirits. Tour the Winery in Cambridge for a Complete Vermont Experience.

TASTING ROOM ANNEX
at Cold Hollow Cider Mill:



3600 Waterbury-Stowe Rd, Waterbury Center, Vt 802-241-3674

WINERY & TASTING ROOM:

64 Vermont Route 104, Cambridge, Vt 802-644-8151

boydenvalley.com



BRIDGESIDE
BOOKS



Wide Selection of Books • Children & Young Adult Books
Cards & Gifts • Vermont Authors • Special Ordering



Bridgeside Books

info@BridgesideBooks.com • www.BridgesideBooks.com
802.244.1441 • 29 Stowe Street, Waterbury, Vermont 05676



SEE & DO



cbewaterbury



@cbc_waterbury

CABOT CHEESE ANNEX STORE

2657 Waterbury-Stowe Road, Waterbury Center, VT 05677

802-244-6334, cabotcheese.coop

Sample our entire selection of award-winning cheeses. Take advantage of our weekly Cabot Specials! Stock up on some of the best specialty foods that Vermont has to offer, including our impressive selection of artisanal cheeses. Browse our wine corner with wines from Vermont and around the world as well as micro-brews and hard ciders.

COLD HOLLOW CIDER MILL

3600 Waterbury-Stowe Road, Waterbury Center, VT 05677

800-327-7537, coldhollow.com

Real Vermont on Route 100! Watch us press fresh apple cider on an old-fashioned rack-and-cloth press. Pressing hours vary. Check website. FREE fresh apple cider and hard cider samples. Live observation beehive. Maple products. Fresh bakery, fresh cider donuts made daily. Open daily 8-6 pm.

See ad on back cover.

CRAFT BEER CELLAR WATERBURY

3 Elm Street, Waterbury, VT 05676

802-882-8034, craftbeercellar.com/waterbury

Craft Beer Cellar is a beer store offering a vast selection of craft beer and cider from the U.S. and beyond. We have eight rotating taps for growler fills specializing in local breweries. We care about education and customer service as much as we do as the beer in our store.

GREEN MOUNTAIN CLUB

4711 Waterbury-Stowe Road, Waterbury Center, VT 05677

802-244-7037, greenmountainclub.org

Maintaining and protecting Vermont's Long Trail since 1910. Things to do when you visit GMC's new Visitor Center: ask friendly and knowledgeable staff about hiking in Vermont, shop for local maps, hiking books, and GMC gear and apparel. Take in gorgeous views of the Green Mountains. "The Barn" at GMC is a space available for meetings and small weddings. The surrounding property is also suitable for outdoor ceremonies. *See ad page 36.*

GREEN MOUNTAIN COFFEE CAFÉ & VISITOR CENTER

1 Rotarian Place, Waterbury, VT

1(877) TRY-BEAN, greenmountaincoffee.com

Our convenient and welcoming location at the Historic Waterbury Train Station. The newly refreshed landmark uniquely celebrates the rich, 35-year history of Green Mountain Coffee and the great state of Vermont. Participate in hands-on education about specialty coffee. Enjoy delicious baked goods and an artfully pulled espresso or our signature Maple Supreme. FREE COFFEE SAMPLES. Open Mon-Fri 7am-5pm, Sat/Sun 8am-5pm. *See ad page 23.*

GRENIER'S GARDEN & BAKERY

1413 Guptil Road, Waterbury Center, VT 05677

802-244-8057

Grenier's Garden and Bakery is a family owned and operated business in the heart of Waterbury Center, just off Rte. 100. Over 20 years in business. Open mid-June to October 31, 7 days a week, 10am to 6:30pm. Fresh produce, berries and we are known for our wonderful sweet corn. Bakery goods are made and baked on premises.

8 DiscoverWaterbury.com

CRAFT BEER CELLAR™

Waterbury, VT

HUNDREDS OF CRAFT BEERS

We care about education and customer service
as much as we do about the beer in our stores.

Thanks for loving good beer.



Bottles and Cans | Growlers
Beer Education | Events

3 Elm Street | Waterbury | Vermont

across the street from Prohibition Pig

802.882.8034 | craftbeercellar.com/waterbury



LAKE CHAMPLAIN CHOCOLATES

2657 Waterbury-Stowe Road, Waterbury Center, VT 05677
802-241-4150, lakechamplainchocolates.com

Since 1983, Lake Champlain Chocolates has been crafting specialty chocolates that capture the essence of Vermont. Combining local ingredients like fresh cream, sweet butter, honey and pure maple syrup with fair trade certified chocolate, we create irresistibly delicious confections. Visit our store in Waterbury for truffles, salted caramels, and clusters, plus factory seconds, hand whipped fudge, and hot chocolate.

RUELLE BOUTIQUE

21 Stowe Street, Waterbury, VT 05676
802-882-8142, rueleboutique.com

Ruelle Boutique is a trendy women's clothing, shoe and accessories store with vibrant soft blue walls and girlish pink accents that offers a fun and relaxed shopping experience. Some of our popular brands include Toms, Jambu, Spring Step, Downeast Basics, Mystree, Hanky Panky, Hobo, Dylan and so much more. Come Visit us in historic downtown Waterbury. *See ad inside back cover.*

SMUGGLERS' NOTCH DISTILLERY

2657 Waterbury-Stowe Road, Waterbury Center, VT 05677
802-309-3077, smugglersnotchdistillery.com

Taste why SND vodka is rated #1 in the U.S. by the Wine Enthusiast®. Sample small-batch spirits in a unique setting over the mountain from our Jeffersonville distillery. The Barrel House Tasting Room welcomes guests to hear our story, learn about creating spirits, and purchase award-winning vodka, gins, rum, bourbon, maple bourbon, and wheat whiskey as well as distillery-related gifts.



Nº1 DOMESTIC VODKA **95** PTS. RATING **WINE ENTHUSIAST**

SMUGGLERS' NOTCH DISTILLERY

Smugglers' Notch Distillery

TASTING ROOMS OPEN DAILY

BURLINGTON, VT 28 CHURCH ST. WATERBURY CTR., VT 2657 WATERBURY STOWE RD.
JEFFERSONVILLE, VT 276 MAIN ST. SMUGGLERSNOTCHDISTILLERY.COM
PH: 802.309.3077 PLEASE ENJOY RESPONSIBLY



DISCOVER THE ARTS IN DOWNTOWN WATERBURY!

TABBATHA HENRY DESIGNS creating modern porcelain lighting and sculpture inspired by nature.

STOWE STREET CAFÉ featuring locally handcrafted coffee, food and art.

JEREMY AYERS POTTERY store features contemporary functional pottery and complimentary homewares and lifestyle items.

AXEL'S GALLERY & FRAME SHOP exhibits work by area artists and artisans and hosts almost monthly artist receptions.

See ad page 12.



STOWE STREET EMPORIUM

23 Stowe Street, Waterbury, VT 05676
802-244-5321, stowestreetemporium.com

Stowe Street Emporium is beautifully merchandised with treasures from the world over. Stylish and comfortable clothing and accessories for men and women, cards, gifts, novelties, puzzles, baby gifts, rugs and home decorations. You'll find Vermont made items and Vermont chocolate all within this handsome 19th century storefront. Located on Stowe Street in historic downtown Waterbury. *See ad inside back cover.*

VERMONT ARTISAN COFFEE & TEA, CO.

11 Cabin Lane, Route 100, Waterbury Center, VT 05676
802-244-8338, vtartisan.com

Come visit our state-of-the-art coffee roaster and coffee bar. Delicious coffees, espresso drinks and whole bean coffees to take home. *See ad page 13.*

WATERBURY SPORTS

46 South Main Street, Waterbury, VT 05676
802-882-8595, WaterburySportsVT.com

We are a sporting goods store selling skis, snowboards, snowshoes, bicycles and team sport equipment such as lacrosse, baseball, soccer and hockey. We have a full service tune and repair shop for skis, snowboards and all types of bikes. *See ad page 13.*

DISCOVER THE ARTS *in downtown Waterbury!*

TABBATH
HENRY



tabbathahenry.com

studio showroom: 92 stowe street: thurs-sat 1-8pm



**STOWE
STREET
CAFE**
local : coffee + food + art = ♥
29 Stowe Street, Waterbury, VT
www.stowestreetcafe.com
Tuesday - Saturday 7:30 AM - 4 PM



**Pottery Studio
Guest House
Store**

8 Elm Street,
Waterbury
Tues-Sat 12-5

jeremyayerspottery.com

**AXEL'S GALLERY
and Frame Shop**

5 Stowe Street in historic downtown Waterbury



Open Tues-Fri 10-6, Sat 10-4

802.244.7801
AxelsGallery.com
Find us on Facebook



Come Visit Us!

Come enjoy fresh from the roaster brewed coffee, espresso, cappuccinos, whole bean coffees and more at our new state-of-the-art, European Coffee Bar & Roastery.



11 Cabin Lane off Route 100, Waterbury Center 05677
vtartisan.com



Waterbury's local sporting goods store

Whether you're an enthusiast or dabbler, we have the gear, apparel and knowledge to outfit your family.

- Full service ski, snowboard and bike shop
- Sell, tune and rent the best gear
- Team sports source specializing in soccer, lacrosse, hockey, baseball and more

46 South Main Street, Waterbury, VT
802.882.8595 • www.WaterburySportsVT.com





www.vermontbrewers.com



Craft Beer Capital of the World!
Design by Robbie Lee Blanchard

Beer flows through the Green Mountains like the water in our rivers and streams: plentiful, spirited! All of our brews course through Vermont's hills and valleys as part of our uncommon lifeblood.

Vermont's beers have recently garnered national, and even global, accolades. Three brands in particular, Waterbury's own Heady Topper from the nearby Alchemist, Lawson's Finest Liquids from the nearby Mad River Valley, and Hill Farmstead in Greensboro, stand out from the crowd.

Thirsting for beer to take on a picnic or take away for home? With more than 700 craft beers from nearly 200 breweries, the Craft Beer Cellar features brews and hard cider from Vermont, across the country, and internationally. Head over to the growler bar to get a fill to go from any of their 8 local beers on tap.

North, south, yeast, and west...Waterbury is at the center of it all.

BREWERIES TO VISIT WHILE STAYING IN WATERBURY (LISTED SOUTH TO NORTH WITH DISTANCES):

Prohibition Pig	Waterbury (0 miles)
Big Tree Brewery@The Reservoir	Waterbury (0 miles)
Trapp Lager Brewery	Stowe (11.7 miles)
The Alchemist	Stowe (12 miles)
Idletyme Brewing	Stowe (11.8 miles)
Rock Art Brewery	Morrisville (18.6 miles)
Lost Nation	Morristown (19.4 miles)
Hill Farmstead Brewery	Greensboro (47 miles)

Don't forget to ask for a Vermont Brewery Passport at any of Vermont's participating breweries.

Submit your stamped and completed passport for Vermont beer gear!
vermontbrewers.com/passport-program/



Uncommonly Good Food and Drink
**ONE OF VERMONT'S PREFERRED
 DESTINATIONS FOR FOOD AND
 BEVERAGE ENTHUSIASTS**

The local atmosphere of our candlelit restaurants, boisterous pubs, colorful cafes, and family eateries is anything but provincial. From barn to mill to blue stone slab, take in the ambience, delight in fine flavors and surprising blends, and let your palate lead you on a flavorful tour right from your table, booth, or bar stool.



MICHAEL'S ON THE HILL

Whether tangy or smooth, our eats begin with high quality, wholesome ingredients. It's no wonder Waterbury is identified as one of Vermont's newest destinations for food connoisseurs. Hen of the Wood at the Grist Mill and Michael's on the Hill are just a few of our restaurants that have received accolades from leading food critics, and the acclaim of the most prestigious culinary awards.



BOYDEN VALLEY WINERY & DISTILLERY

Experience cuisine created by imaginative, award-winning chefs using a cornucopia of vegetables, fruit, meat, cheese, maple, and other specialty products direct from Vermont farms, as well as from around the globe. With choices to fit every budget, friendly service, and eclectic menus, Waterbury

area restaurants support sustainable agriculture by feeding the (un)common good.

Redefine après ski (or après hike, paddle, or swim) with refreshing beer, wine, spirits, and small plates that hit the spot. Local beers; big flavor: Lawson's Finest, The Alchemist, Trapp Lager, and Hill Farmstead are just a few of our nationally-recognized brews that can regularly be found beside Vermont-made wines and spirits. The Reservoir, Arvads, Blackback and Prohibition Pig pubs are a mecca for Vermont beers, including the famous Heady Topper, in its hometown of Waterbury.

If you are looking for a special wine experience, look no further than Boyden Valley Winery and Spirits Tasting Annex, located at the Cold Hollow Cider Mill. Taste their award winning wines and spirits and learn more about the Boyden family, pioneers in the wine industry. Lean more to the sweeter side? Try Barn Dance, a special hard cider brewed on site from locally grown apples. Or, head down the road to Smugglers' Notch Distillery to sample their distinctive, award winning spirits that are barrel aged, blended and hand bottled one small batch at a time.

**EXPERIENCE UNCOMMON CUISINE
 CREATED BY IMAGINATIVE CHEFS**

Top off your meal with Green Mountain Coffee, spiced Cold Hollow Cider, or a scoop of Ben & Jerry's ice cream, all created right in Waterbury with local ingredients and a sprinkle of Vermont alchemy.



HEATHER GLENN, ARVADS GRILL



EAT & DRINK

ARVADS GRILL

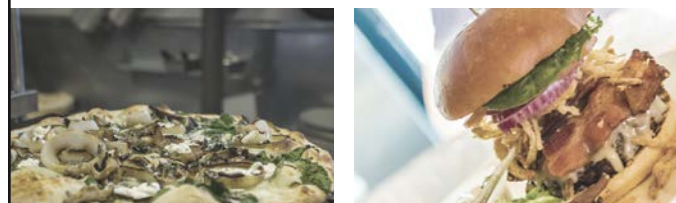
3 South Main Street, Waterbury, VT 05676
802-244-8973, arvads.com

Arvads Grill offers an extensive, seasonal menu crafted with a commitment to quality locally-sourced ingredients. Featuring grilled hand-cut steaks, daily localvore salad, hand-cut bottomless fries, Boyden beef burgers, and many gluten-free options. Served alongside a full selection of Vermont spirits and over 30 craft beers in a casual, comfortable environment with heated patio seating. It's fresh. It's local. It's Arvads. *See ad page 22.*

BLUE STONE PIZZA

15 Stowe Street, Waterbury, VT 05676
802-882-8185, bluestonevermont.com

We are a rustic pizza shop and tavern featuring old-world hand tossed pizza with a new-world local twist. We begin with fresh dough, bread and sauces made by hand. We add the best all natural ingredients and prepare many unique toppings in house. In addition to the best classic pizza around, we work with fresh, local and in season ingredients to offer new farm-inspired variations.



Vermont's Best Hand Tossed Pizza, and Finest Craft Beers
11:30AM to Close 7 days a week
www.bluestonevermont.com

Maxi's

BREAKFAST • LUNCH • DINNER

Breakfast served all day

Open 7 days a week at 7:30am

Great family restaurant

Serving locals since 2005

Beer, wine and spirits

Call for dinner hours

Located conveniently off the
Waterbury roundabout,
a mere tenth of a mile
from the I-89 entrance.

47 North Main St., Waterbury

maxisrestaurant.com
244-0910





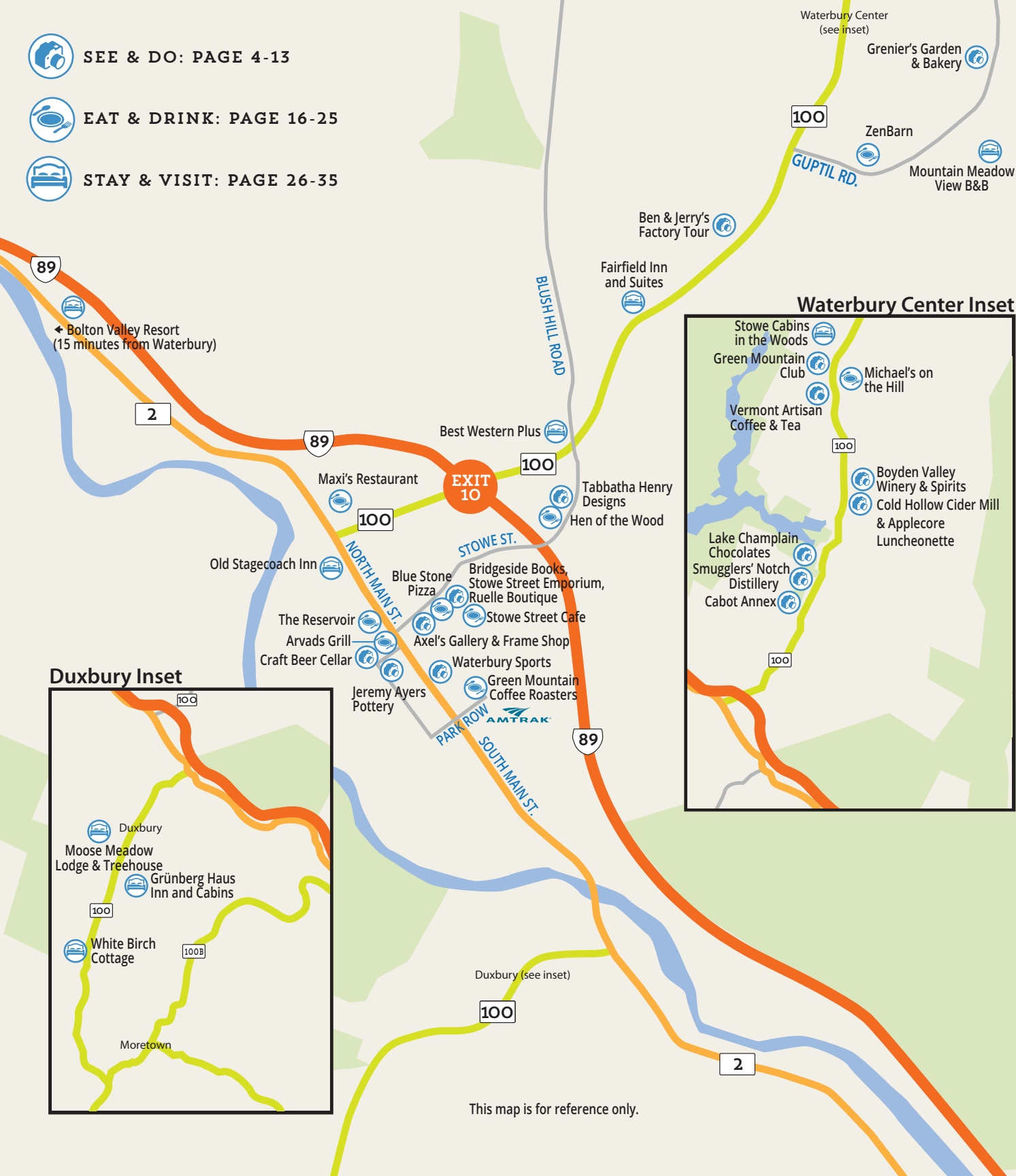
SEE & DO: PAGE 4-13



EAT & DRINK: PAGE 16-25



STAY & VISIT: PAGE 26-35



This map is for reference only.



EAT & DRINK

GREEN MOUNTAIN COFFEE CAFÉ & VISITOR CENTER

1 Rotarian Place, Waterbury, VT

1(877) TRY-BEAN, greenmountaincoffee.com

Our convenient and welcoming location at the Historic Waterbury Train Station. The newly refreshed landmark uniquely celebrates the rich, 35-year history of Green Mountain Coffee and the great state of Vermont. Participate in hands-on education about specialty coffee. Enjoy delicious baked goods and an artfully pulled espresso or our signature Maple Supreme. FREE COFFEE SAMPLES. Open Mon-Fri 7am-5pm, Sat/Sun 8am-5pm.

HEN OF THE WOOD WATERBURY

92 Stowe Street, Waterbury, VT 05676

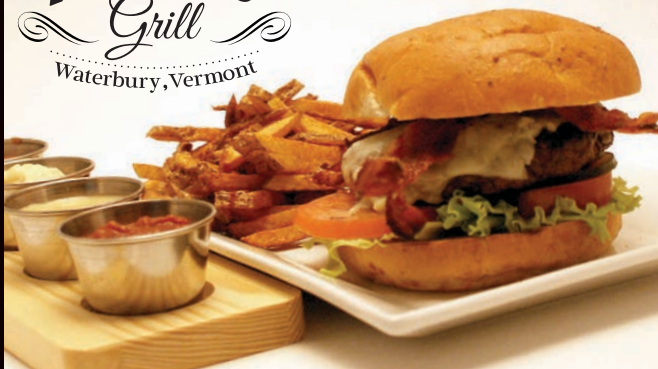
802-244-7300, henofthewood.com

Seasonal American food celebrating the farms of the Northeast. Experience fine dining and rustic elegance in a historic 19th century mill building. Hen of the Wood features an extensive wine list as well as an artisan cheese list. Our chefs believe in sustainable agriculture and have created a menu to showcase fresh, seasonal, and especially local Vermont products as well as wild edibles such as Hen of the Wood mushrooms. Reservations highly recommended. *See ad page 25.*

**CRAFT BEERS, VERMONT SPIRITS, LOCALLY SOURCED INGREDIENTS,
BOTTOMLESS HAND-CUT FRIES, STEAKS, BURGERS**

ARVADS
Grill
Waterbury, Vermont

**YOU HEARD RIGHT. WE'VE GOT
BOTTOMLESS HAND-CUT FRIES!**



IT'S FRESH. IT'S LOCAL. IT'S ARVADS.

**3 SOUTH MAIN ST | WATERBURY, VT 05676
802.244.8973 | ARVADS.COM**



Café & Visitor Center

COME VISIT US

**AT WATERBURY'S HISTORIC
TRAIN STATION**

- Specialty Coffee Drinks & Local Artisan Treats
- Source-to-Cup Coffee Education Exhibits

📍 1 ROTARIAN PLACE, WATERBURY, VT 05676

MON. - FRI. 7AM - 5PM | SAT. - SUN. 8AM - 5PM

1-877-TRY-BEAN

WWW.GREENMOUNTAINCOFFEE.COM

**MAXI'S RESTAURANT**

47 North Main Street, Waterbury 05676

802-244-0910, maxisrestaurant.com

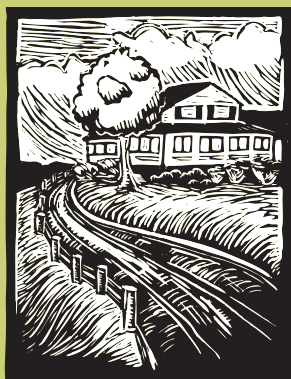
Open every day for breakfast, lunch and dinner. Breakfast is served all day and there are seven Eggs Benedict options. Our down-home options range from pastas to open-faced sandwiches to smoked Gouda mac and cheese. Beer, wine and spirits available. Call for dinner hours. *See ad page 19.*

MICHAEL'S ON THE HILL

4182 Waterbury-Stowe Road, Waterbury Center, VT 05677

802-244-7476, michaelsonthehill.com

Enjoy the "ultimate Vermont dining experience" while we provide you with the highest level of quality and service in a relaxed, welcoming atmosphere. Farm to Table Cuisine prepared by Swiss Chef Owner, Michael Kloeti. Michael's inspiration stems from his childhood—European comfort food, sustainable, local, and unprocessed. Wine Spectator Award of Excellence "Best Chefs America," Certified Green Restaurant. Dinner 5:30-9:00pm. Closed Tuesday. Reservations highly recommended.

**MICHAEL'S
ON THE HILL**

Farm-to-Table Cuisine

Thursday Nights are Local Night

"Best Restaurant, Best Steak & Best Wine List in Stowe"
—*Forbes Traveler*

"Most Romantic Restaurant in Vermont"
—*MSN.com*

Waterbury Center • (802) 244-7476
michaelsonthehill.com

Group Facilities • Catering • Cooking Classes

Tour the (un)Commonplace

Suggested itineraries available at:

DiscoverWaterbury.com/itinerary-list.php**THE RESERVOIR RESTAURANT
& TAP ROOM**

1 South Main Street, Waterbury, VT 05676

802-244-7827, waterburyreservoir.com

The Reservoir is a 99-seat restaurant serving dinner 7 days a week and lunch Saturday and Sunday. Located in the heart of historic downtown Waterbury in the beautiful Green Mountains of Vermont. We specialize in Vermont comfort food and some of the best beers available. 38 draft beers (the most in the state) as well as a full bar and wine list. Live entertainment every Saturday night and après ski in the winter. *See ad inside front cover.*

STOWE STREET CAFÉ

29 Stowe Street, Waterbury, VT 05676

StoweStreetCafe.com

Featuring handcrafted coffee and teas, breakfast and lunch, and a unique collection of Vermont made art and gifts. We are locally owned and located in the heart of historic downtown Waterbury. Open Tuesday-Saturday 7:30am - 4pm. *See ad page 12.*

ZENBARN

179 Guptil Road, Waterbury Center, VT 05677

802-244-8134, zenbarnvt.com

Globally inspired farm to table food served in a beautifully renovated barn. Featuring the area's best craft beers, spirits, wines and creative cocktails. Casual, fun environment with outdoor seating and games. Perfect place for the family, large groups, a romantic dinner, or a night out with friends. Check out our full schedule of live music, events and wellness classes online. *See ad page 38.*

**HEN OF
THE WOOD**

Waterbury Vermont



Define Your Uncommon Travel Adventure

LET YOUR VISION LEAD YOU

Will you choose a warm and relaxing B & B, the full-service Bolton Valley Resort, or the inviting Best Western Plus hotel? Maybe you will try something new. Consider the Austrian chalet Grünberg Haus, Moose Meadow Lodge's resplendent treehouse perched in a stand of maple trees, the newly built Fairfield Inn & Suites.

Your accommodations define your travel adventure. Whether you seek a hub for skiing, hiking, paddling, and cycling with your family, or a romantic retreat, downtown dining or immersion in the arts, or if business meetings lead you to the area, you will find the right fit among our selection of fine Waterbury area lodging. Each property is distinctive: a nearly 200-year-old carriage stop at the Old Stagecoach Inn, the reunion-style arrangement at Mountain Meadow View, or secluded cottages tucked away in the pines at Stowe Cabins in the Woods, or softwoods at White Birch Cottage.

OLD STAGECOACH INN



FAIRFIELD INN & SUITES



BOLTON VALLEY RESORT

Many properties offer a full country breakfast to fuel your morning. Cap off the day with in-house pubs and dining. All Waterbury area accommodations are close to our celebrated shops, recreation, and restaurants, which have themselves become destinations.

Waterbury is centrally located at Exit 10 off Interstate 89, the state's major north-south highway that winds along the spine of the Green Mountains. Route 100, dubbed "The Skiers' Highway" as well as one of the most scenic drives in Vermont, threads through our region. The Mad River Byway and the Green Mountain Byway converge on our doorstep. The ski and summer resorts of Stowe, Bolton, Sugarbush and Mad River Glen are readily accessed, and we are less than 30 minutes from Montpelier, Stowe, and Burlington.



WHITE BIRCH COTTAGE

Let your preference and inspiration lead the way. The (un)common denominator among all our lodging properties is our hosts' warm smiles and their welcoming demeanor. We are ready to assist with any need, and we pledge to help you make your visit truly memorable.



STAY & VISIT



Beautiful Guest Rooms
Fireplace Suites
Glass Enclosed Pool
Whirlpool
Fitness Center
Fireside Library
Covered Bridge-onsite
Complimentary
Breakfast & Wi-fi



Minutes to:

Ben & Jerry's
Ice Cream Factory
Craft Beer Breweries
Cold Hollow Cider Mill
Cabot Creamery Annex
Green Mountain Coffee

Each Best Western® branded hotel
is independently owned and operated.



Waterbury-Stowe

Atop a plateau in the
Heart of the Green Mountains

I-89, Exit 10 & Rte 100 N
bestwesternwaterburystowe.com
802-244-7822

AYER'S GUEST HOUSE & POTTERY STORE

8 Elm Street, Waterbury, VT 05676

802-363-3592, ayersguesthouse.com

On Elm Street in Waterbury Village you will find us in my great great grandfather's carriage barn. Built in 1890, it was the O.L. Ayers Carriage Shop; it's now the home of Jeremy Ayers Pottery. Our Store features contemporary functional pottery and homewares. Ayers Guest House is a modern rustic two-bedroom apartment available for short or long-term stay. *See ad page 12.*

BEST WESTERN PLUS

45 Blush Hill Road/Rte. 100N, Waterbury, VT 05676

802-244-7822, bestwesternwaterburystowe.com

Situated on a plateau in the Green Mountains, the Best Western Plus is centrally located with easy drive distance to skiing, mountain biking, touring, shopping, dining and other activities. Accommodations range from rooms with two double beds to luxurious suites with fireplaces and whirlpool tubs. Glass enclosed indoor pool and hot tub, fully equipped fitness center, and complimentary breakfast.

BOLTON VALLEY RESORT

4302 Bolton Valley Access Road, Bolton, VT 05477

802-434-6813, boltonvalley.com

Bolton Valley is a ski and snowboard area located 15 minutes from Waterbury. The resort features 71 trails spread across 3 mountain peaks and 100km of Nordic trails. Ski-in, ski-out lodging is available in the mountainside base village. The area is also home to Vermont's most extensive night skiing and features a Sports Center with pool, hot tub and sauna. The slopeside Inn at Bolton Valley is open year round.



Join Our Family

Bolton Valley is locally owned and all lodging is just a short walk to 71 alpine trails & glades, three terrain parks, over 1200 acres of Nordic & backcountry terrain, night skiing, the Sports Center and slopeside restaurants. Bolton Valley is just 15 minutes from Waterbury, VT.



boltonvalley.com • 877-9BOLTON



STAY & VISIT



Travel with confidence at Fairfield Inn & Suites by Marriott®, a hotel with outstanding service for an easy and comfortable stay at an exceptional value. We look forward to welcoming you to our thoughtfully designed guest rooms and suites with plenty of room to work and relax, the perfect place to recharge between your Vermont adventures.

Fairfield Inn & Suites Waterbury Stowe

1017 Waterbury Stowe Rd.
Waterbury VT. 05676
802-241-1600

Fairfield.com/BTVWB



FAIRFIELD
INN & SUITES®
Marriott.

To reserve your room, call 1-800-MARRIOTT or visit Marriott.com

FAIRFIELD INN & SUITES

1017 Waterbury-Stowe Road, Waterbury, VT 05676

1-802-241-1600, marriott.com/btvwb

Nestled in Vermont's legendary Green Mountains, the Fairfield Inn and Suites is the ideal destination for your Vermont visit. Located just off I-89 at Exit 10 and offering 84 rooms ranging from deluxe kings to luxurious fireplace suites. We are within 30 minutes of four incredible ski resorts, two cross country ski centers, epic hiking and mountain biking trails, kayaking, fishing and swimming. All this, plus we are just steps away from Ben and Jerry's Factory. The best choice for your stay in the heart of Vermont!

GRÜNBERG HAUS INN AND CABINS

94 Pine Street, Waterbury, VT 05676

802-244-7726, 800-800-7760, grunberghaus.com

Grünberg Haus is a cozy, eclectic chalet close to the best food, craft beer and all Vermont outdoor activities. Variety of common spaces, BYOB tavern, beautiful fieldstone fireplace for evening relaxation with s'mores, billiards room and separate TV room with full cable package. Self-service bicycle, ski and snowboard tuning and repair shop. Breakfast included and complimentary wifi!

STAY & VISIT



SINCE 1972

GRÜNBERG HAUS INN *and* CABINS

WATERBURY, VERMONT

An eclectic Austrian chalet in the ♥ of Vermont!



Take A Beercation!

Visit Vermont Breweries!

GRUNBERGHAUS.COM
802-244-7726 94 PINE ST, WATERBURY, VT 05676



GRÜNBERG HAUS INN & CABINS



STAY & VISIT

MOOSE MEADOW LODGE & TREEHOUSE

607 Crossett Hill, Waterbury, VT 05676
802-244-5378, moosemeadowlodge.com

Experience Central Vermont's only luxury log home B&B! Enjoy the serenity of 86 acres with mountain views, trails and a trout pond. This extraordinary property features four luxurious guest rooms plus one stunning Treehouse. A perfect place to celebrate an anniversary, wedding, honeymoon, babymoon, proposal, family reunion, or to simply relax. Learn about our special packages.

MOUNTAIN MEADOW VIEW B&B

315 Shaw Mansion Road, Waterbury Center, VT 05677
802-244-8944, central-vt.com/web/mtmeadow

The real Vermont. Quiet, modern hillside B&B with the best mountain views in Waterbury. Separate guest level with deck, common room and three bedrooms with shared bath and in-room wash sinks. Full country breakfast daily. Ideal rental for groups or families, sleeping six persons. A non-smoking and pet free B&B.

OLD STAGECOACH INN

18 North Main Street, Waterbury, VT 05676
802-244-5056, 800-262-2206, oldstagecoach.com

Built in 1826 as a stagecoach stop, now a beautifully restored country inn. Walk to downtown shops and restaurants. Surrounded by lakes, rivers, mountains, skiing, hiking, canoeing. Eleven guest rooms, spectacular full country breakfast. AAA approved Three Diamond.



www.oldstagecoach.com

THE OLD STAGECOACH INN

The charm of a bygone era.

Beautiful rooms with full breakfast.

Listed in the National Registry of Historic Places.

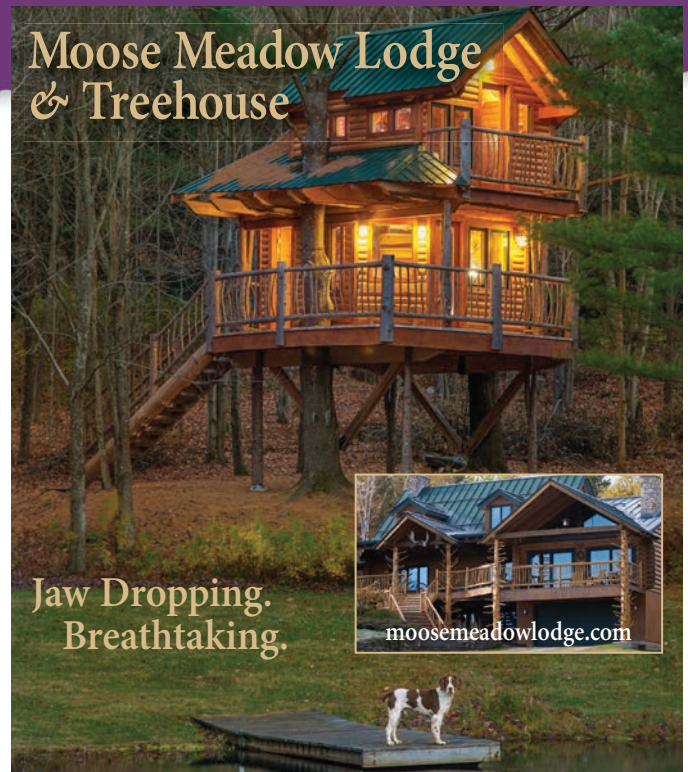
Walk to shops and restaurants.

AAA approved. Rates \$100-170 per room.

18 North Main Street, Waterbury, VT 05676

802-244-5056 • 800-262-2206

Moose Meadow Lodge & Treehouse



Jaw Dropping.
Breathtaking.

moosemeadowlodge.com

MOUNTAIN MEADOW VIEW B&B



COME ENJOY THE WONDERFUL VIEW!

The real Vermont. Quiet, modern, hillside B&B with spectacular mountain views. Separate guest level with deck, common room and three bedrooms with shared bath and individual wash sinks. Full country breakfasts served daily. Centrally located for "all season" activities in the Stowe-Waterbury area. Discounts available for skiing at Stowe and Sugarbush as well as at local attractions such as Ben & Jerry's. Ideal rental for groups or families (6 to 8). MMV is a non-smoking and pet-free B&B. Your host Walter Frey.

wjfrey@comcast.net

802-244-8944

www.central-vt.com/web/mtmeadow



STOWE CABINS IN THE WOODS

513 Cabin Lane, Waterbury Center, VT 05677

802-244-8533, stowecabins.com

Vermont cabins for rent in a beautiful, secluded Vermont forest, yet close enough to all that the Stowe, Vermont resort area has to offer. Be a world away from it all inside your own Vermont cabin. Vermont vacations don't get any better than this.

WHITE BIRCH COTTAGE

1813 Dowsville Road, South Duxbury, VT 05660

802-244-7251, whitebirchcottage.com

White Birch Cottage is nestled in a private setting with easy access. It offers a spacious floor plan which can welcome 2-8 guests. Perfect for a couple or family attending a local Mad River Valley wedding, ski vacation, family reunion or any special occasion. Well-appointed and impeccable are just two adjectives that would best describe our comfortable and cozy cottage!



WHITE BIRCH
COTTAGE



1813 DOWSVILLE ROAD, DUXBURY
WHITEBIRCHCOTTAGE.COM • (802) 244-7251

Tour the (un)Commonplace

Suggested itineraries available at:
DiscoverWaterbury.com/itinerary-list.php



Stowe
CABINS
in the woods

Be a world away from it all in your own cabin in the woods, yet central to all that Waterbury and Stowe have to offer. Variety of cabin sizes to fit your needs. All cabins have bedroom(s), kitchen, living room, TV, full bath, and deck with BBQ grill. Linens, towels, cookware, and tableware included. Pet and family friendly.

stay@stowecabins.com • www.stowecabins.com

802-244-8533 • Waterbury Center, VT

5 miles south of Stowe • 5 miles north of I-89



CALENDAR OF EVENTS

January	Waterbury WinterFest	End of January – Early February
February	Woodchuck Day	February 2
March	Ben & Jerry's Winter Festival	1st Saturday
	Intergalactic Croquet Tournament	3rd Saturday
April	Egg Hunt	Saturday before Easter
	Gravel Grinder	3rd Sunday
May	Waterbury Farmers Market	Thursdays Late May – Early October
June	Kids Fest	1st Saturday
	Not Quite Independence Day Parade	Saturday before July 4
	Green Mountain Brews & Grooves	Saturday before July 4
	Vermont Paddleboard Festival	4th Sunday
	Concerts in the Park	Mid June – Early September
July	Waterbury Arts Fest	2nd Weekend
August	Antique Car Show	2nd Weekend
September	Sunzilla - Sunflower Contest	2nd Thursday
October	Leaf Peepers 5k and Half Marathon	1st Saturday
November	Wrap It Up & Win-Shop Local	Thanksgiving – Christmas
	Small Business Saturday	Saturday after Thanksgiving (or 4th Saturday in November)
December	River of Light Lantern Parade & Bonfire	1st Saturday
	Waterbury Holiday Stroll	1st Saturday

Green Mountain Club Visitor Center Route 100

4711 Waterbury-Stowe Rd., Waterbury Center



HIKING INFORMATION

PH: (802) 244-7037

MAY-OCTOBER: MONDAY-SUNDAY 9-5

NOVEMBER-APRIL: MONDAY-FRIDAY 10-5

www.GreenMountainClub.org

WEDDINGS & EVENTS

GORDON MILLER



THE PERFECT PICTURE, PAINTED AROUND YOU

Imagine your perfect day: declaring your lifetime loyalty beside a cascading waterfall, in a quiet New England carriage house, or on a snowy slope with a crystalline panorama spread at your feet. Whether outside or in, Waterbury is packed with unique settings to help you kick off your unity as a married couple.

The inns, resorts, restaurants, and caterers of Waterbury will paint you into your perfect picture. Whether you are a party of two or 200, facility owners will help you target the ideal location. Our innkeepers and resort managers are nimble and resourceful with ample suggestions of local vendors that will smoothly facilitate all the elements of your magical day. Most properties will also gladly accept elopements.

Local Wedding Resources


Axel's Gallery & Frame Shop
Best Western Plus
Green Mountain Club
Maxi's Restaurant
Michael's On The Hill
Moose Meadow Lodge
Old Stagecoach Inn
Proud Flower

If needed, many facilities will also assist couples in attaining wedding licenses and related paperwork, or an officiant for the ceremony. Packages are available that may include cake, flowers, and honeymoon options for tours, recreation, and romantic dining. Something borrowed, something blue...something uncommon, something Waterbury.

The unique accessibility of our location, and the seamless service and intimate environment of our properties, also makes Waterbury your uncommonly ideal destination for reunions, retreats, business meetings, and other special events.



MICHAEL'S ON THE HILL



ZENBARN



EAT. DRINK. BE.

DINNER TUE. - SAT. • SUNDAY BRUNCH • LIVE MUSIC • EVENT SPACE

ZENBARNVT.COM • 802.244.8134 • 179 GUPTIL RD., WATERBURY CTR, VT



An Ever-Changing & Beautifully Merchandised Store with Stylish Clothing for Men & Women, Cards, Gifts, Rugs, Home Decor, Candles, Baby Gifts, Novelties & So Much More!

23 Stowe Street • 802-244-5321
Historic Downtown Waterbury
www.StoweStreetEmporium.com



A LOVELY LITTLE BOUTIQUE
FEATURING A COLLECTION OF
CHIC, CONTEMPORARY
WOMEN'S FASHIONS, SHOES
& ACCESSORIES

21 STOWE STREET • 802-882-8142
HISTORIC DOWNTOWN WATERBURY
WWW.RUELLEBOUTIQUE.COM





Can't go home for lunch?
Go homemade.

Homemade is our favorite word.

Once you taste our own baked-daily sandwich breads and the homemade soups at our luncheonette, it'll be your favorite word too.

VERMONT to the CORE®

3600 Waterbury/Stowe Road, Waterbury Center, VT 800-327-7537 Say hi anytime!  



A feast for the senses.

A real cider mill is a real experience. Come watch REAL apple cider donuts being made. The lovely aroma. The incomparable taste. The happy smiles. Then take the experience home with timeless classics like fresh cider, bakery items, jams, and jellies.

Get half a dozen of our homemade apple cider donuts **FREE** with any purchase over \$25.

VERMONT to the CORE®

3600 Waterbury/Stowe Road, Waterbury Center, VT 800-327-7537 Say hi anytime! 