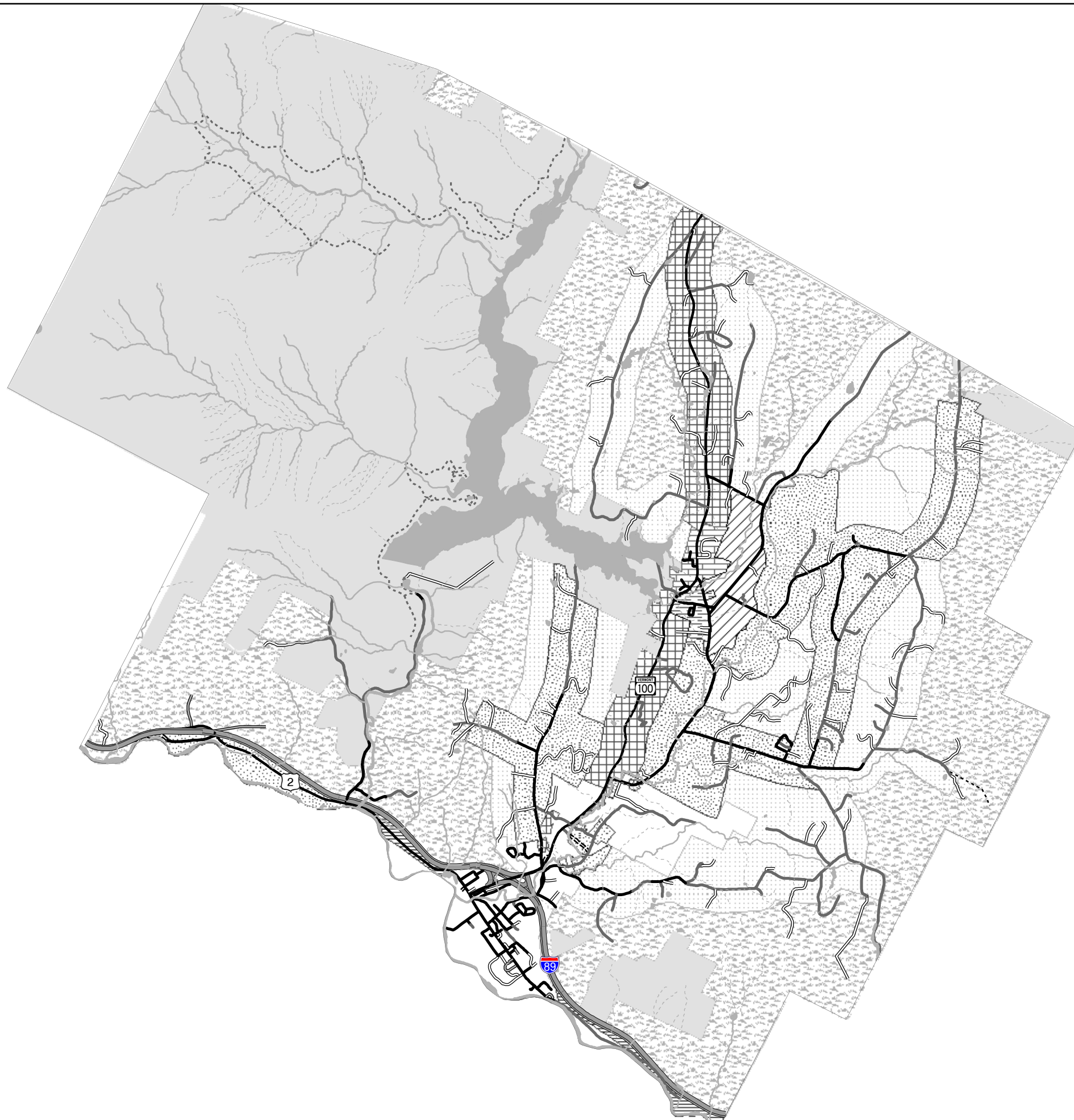





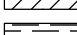
Waterbury Town Zoning Map

As Amended Through September 2006



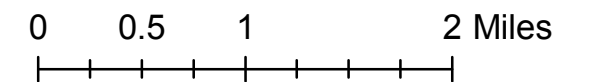
Town Zoning

Type

-  CONSERVATION
-  INDUSTRIAL
-  LOW DENSITY RESIDENTIAL
-  MEDIUM DENSITY RESIDENTIAL
-  ROUTE 100
-  STATE FOREST
-  TOWN COMMERCIAL
-  TOWN MIXED RESIDENTIAL
-  TOWN NEIGHBORHOOD COMMERCIAL

Road Types

-  Paved Public Highway
-  Unpaved Public Highway
-  State Forest Highway
-  Paved Private Roads
-  Unpaved Private Roads
-  US/VT Routes
-  Interstate
-  Discontinued Roads



N:\Towns\Waterb\TOWN_Zoning_BW_11x17.mxd

Source:
 Village Zoning: Waterbury Village Zoning Map 2006
 Roads: VGIS/E911 additional roads added by CVRPC 2006
 Town Boundary: USGS Topographic Map 1:24,000

Created by CVRPC GIS 2006
 Data is only as accurate as its original source materials.
 This map is for planning purposes only.
 Map may contain errors and omissions and is only as accurate as its original source.