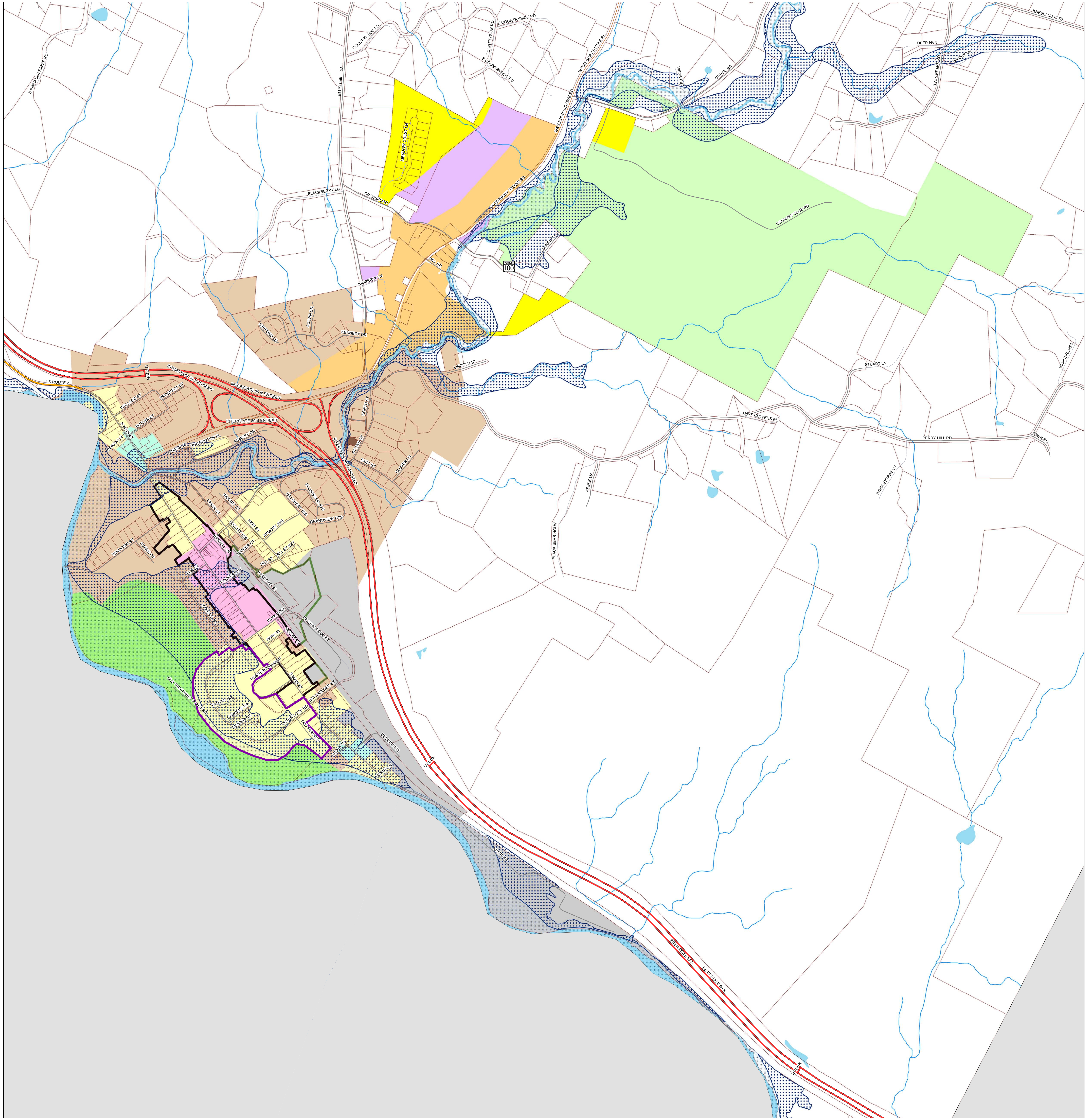


Waterbury Village Zoning 2013



VILLAGE ZONING

- CONSERVATION
- DOWNTOWN COMMERCIAL
- INDUSTRIAL
- MEDIUM DENSITY RESIDENTIAL
- MILL
- RECREATION
- ROUTE 100
- VILLAGE COMMERCIAL
- VILLAGE MIXED RESIDENTIAL
- VILLAGE NEIGHBORHOOD COMMERCIAL
- VILLAGE RESIDENTIAL

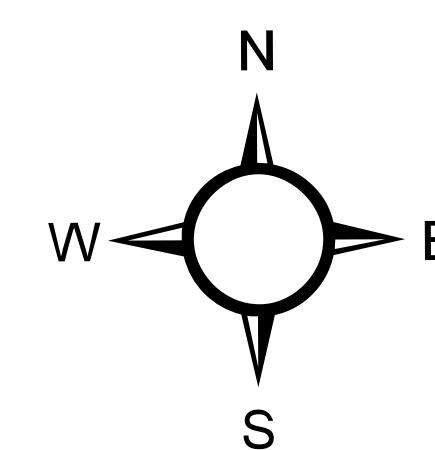
OVERLAY DISTRICTS

- Interim Campus Overlay District
- FLOOD HAZARD AREA OVERLAY DISTRICT**
 - Special Flood Hazard Area 1% Chance of Annual Flood
 - Flood Hazard Area Floodway
- DOWNTOWN DESIGN REVIEW OVERLAY DISTRICT**
 - Historic/Commercial
 - Mixed-Use

- Town Highway
- State Forest Highway
- Private and/or Legal Trail
- US Highway
- Interstate
- Waterbury Parcels 2011
- Lake/River
- Streams

0 0.125 0.25 0.5 Miles

0 0.125 0.25 0.5 Kilometers



Roads: VCGI/E911 2012; Railroads: VCGI 2000
 Surface Water: CVRPC; Surface Water's Data 1999
 Zoning: CVRPC and Waterbury 2007
 Preliminary NFIP: USDA, 2012.
 Down Town Designated Districts: CVRPC and Waterbury, 2008.
 Parcels: CVRPC and Waterbury 2011.

Created April 2006 by CVRPC Updated 2/7/13
 Location: N:\Town\Waterb\VillageZoningMap_2013
 Map is for planning purposes only. Data is only as accurate
 as the original source.