

What's Happening Behind the Fence?

Deconstruction:

We have completed the first phase of the Deconstruction portion of the project and the final phase (6 buildings) will occur next year when the new central plant is in operation.

Sitework:

We have new underground utility work underway throughout the site. Water, sanitary, storm drainage and electrical work is being installed both along the west and east sides of the Historic Core buildings.

Historic Core:

The selective demolition process continues on the interior of the Historic Core. Existing mechanical and electrical systems are being removed and structural framing improvements are underway as well. The flood proofing of the lower level is underway with the first placements of the concrete low strength material (CLSM) fill as we prepare the Historic Core for the future!

New Office Building:

The new concrete footings and frost walls for the New Office Building foundation are well underway. You may have noticed the crane boom towering above the Historic Core, well it is used to set the new structural steel framework in place beginning in the south wing of the NOB.

Central Plant:

The concrete work at the wood chip fuel storage section of the new Central Plant has been placed and the footings and frost walls for the exterior walls of the plant will be formed and placed in the coming weeks.

Safety:

It is a large site, so please be aware of changing conditions!

Check out the work going on in the interior lower and first levels of the Historic Core Buildings!



CONSTRUCTION

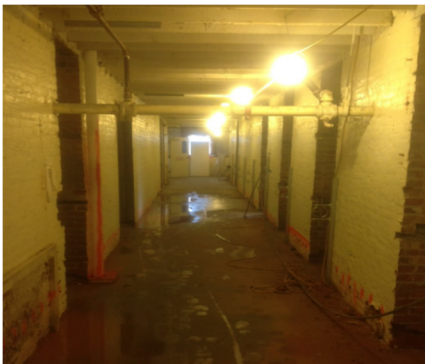
Check us out online!

<http://bgs.vermont.gov/FutureUseWaterbury>

Have Questions?

Reach us by E-mail:

bgs.wsocetam@state.vt.us



PROJECT VIEWS

JUNE 30, 2014



Site view looking West (6-28-14)



Site view looking North (6-28-14)