

## *Waterbury LTCR Projects 2012*

### **COMMUNITY PLANNING and CAPACITY BUILDING**

Construct New Municipal Complex	2
Utilization Study for Municipal Building (51 South Main)	3
Village Police Facilities	4
Assistant Municipal Planner	5

### **ECONOMIC DEVELOPMENT**

Business Resource Center	6
Community Image Building	7
Food Systems Development	8
Waterbury Arts Center	9

### **ENERGY, EFFICIENCY, and TRANSPORTATION**

Bicycle/Pedestrian System, Welcome Center, and Wayfinding	10
Center for Resilient Technology and Development	11
Waterbury Community Energy	12
Create Sustainable Transportation System	13

### **HOUSING and HUMAN SERVICES**

Coordination of Health Services and Childcare/Preschool Relocation	14
Affordable Housing Development	15
ReBuild Waterbury	16

### **INFRASTRUCTURE and FLOOD MITIGATION**

Emergency Power Program	17
Flood Proof Main Sewerage Pump Station	18
Waterbury Village Flood Study	19
Dac Rowe Flood-Proofing and Recreation Enhancement	20

### **PARKS and RECREATION**

Director of Recreation for Waterbury	21
Parks and Recreation Master Plan	22
Little River-Village Connector Trail	23



# Construct New Municipal Complex

## Project Champions

Karen Miller  
802.244.8160  
kjmillervt@gmail.com

Margaret Luce  
802.244.7809  
memomvt@aol.com



Conceptual Site Plan

## Project Description

This project contemplates collocating multiple functions, which may include the library, municipal offices, village police, a museum for the historical society, a Waterbury Welcome Center, and rentable space for non-profits. The new facility would serve as a hub for the community, as well as a civic anchor in the downtown business district. By collocating functions, the project would reduce both construction and future operational costs as well as environmental impacts. At least three potential sites will be analyzed: 51 South Main Street, the State Office Complex, and the existing library site. There will be multiple opportunities for public comment and participation as the project moves forward.

## Action Steps

- Hold public forums to solicit community input
- Select best project site
- Identify funding resources
- Determine preliminary design criteria, including LEED certification standards
- Collaborate with Waterbury Planning Commission to address Vermont State Act 250
- Develop request for proposals (RFP)

## Cost Estimate

\$3,000,000-\$4,000,000

## Project Sponsor

Town of Waterbury



# Utilization Study for the Municipal Building (51 South Main)

## Project Description

The project involves evaluation of the potential options for re-purposing the Village owned lot and building at 51 South Main Street including, but not limited to, a police station, a police station and municipal office complex, possible private business options supporting downtown, or incorporating all or portions of the historic structure on site into one or more of the options.



## Cost Estimate

Study: \$15,000

Capital: TBD

## Project Champions

Village Trustees

## Contact

Skip Flanders

[wtbskip@comcast.net](mailto:wtbskip@comcast.net)

## Project Sponsor

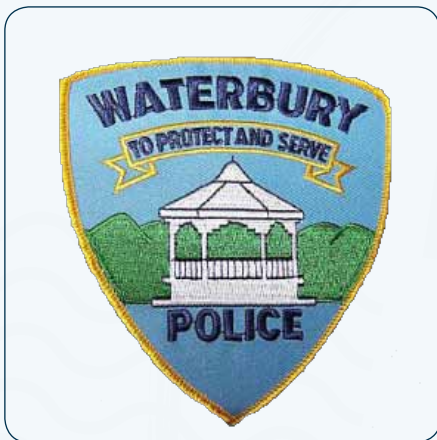
Village of Waterbury



# Village Police Facilities

## Project Description

Waterbury has an immediate need to develop a short-term solution for the location of the Village Police Department. The current, temporary location used by the Police must be vacated for use by the Town Summer Recreation Program. Long-term location options for the Village Police Department should also be considered including, but not limited to Stanley Hall or possible collocation with the Municipal Offices.



## Cost Estimate

\$70,000 (2-year costs)

## Project Champions

Village Trustees

## Contact

Natalie Howell-Sherman  
nataliehowell1@gmail.com

## Project Sponsor

Village of Waterbury



# Assistant Municipal Planner

## Project Description

The Town/Village of Waterbury will benefit from the increased community capacity that an Assistant Municipal Planner with economic development experience will provide. Increased municipal capacity may be a precondition for many long-term community recovery programs and projects as well as general community planning and implementation projects that the Town/Village does not currently have the staffing capabilities to undertake. The Assistant Municipal Planner's responsibilities will include the following:

- Manage three revolving loan funds
- Implement housing and economic development programs
- Provide grant writing assistance
- Implement and administer grant funded housing and economic development projects
- Manage Waterbury's long-term community recovery project implementation

## Action Steps

- Create a job description for the Assistant Municipal Planner position
- Assess municipal budget for funding
- Seek additional funding sources

## Cost Estimate

Salary and Benefits \$65,000

## Project Sponsor

Town of Waterbury

## Project Champion

Steve Lotspeich

802.244.1012

slotspeich@waterburyvt.com





# Business Resource Center

## Project Description

The creation of a business resource center will help to stimulate a rapid recovery of the Waterbury business community. The Center will initiate immediate action steps and develop specific initiatives in order to respond to business inquiries from both existing businesses and potential new businesses. It will provide a consistent, dependable resource for the community to encourage economic growth.

These efforts will be accomplished by the creation of the following positions:

- 1) Long-Term Economic Development Director
- 2) Business Case Manager
- 3) Grants Writer & Administrator



## Cost Estimate

Program costs (first year): \$250,000

## Project Champion

Mark Frier | [friermw@gmail.com](mailto:friermw@gmail.com)

## Project Sponsor

Central Vermont Economic Development Corporation (CVEDC)



# Community Image Building

## Project Description

A community brand is a promise that a place makes with people. One of the major objectives of a community image building initiative is to build community pride around an agreed set of images and phrases, and use those to project that pride to potential investors, visitors, and businesses. Post-Irene Waterbury has a lot to say about our many amazing assets – a branding effort can build market base by providing businesses and those marketing the community a consistent and positive image that can be used to promote both their own interests and those of the community.



## Action Steps

- Research other community image building efforts and glean lessons learned, funding sources, and recommendations of firms that have experience with communities of similar size
- Make a determination to do branding as a stand-alone project or part of a more comprehensive economic development plan (marketing analysis and design)
- Prepare an RFP for technical assistance and seek and secure funding sources including in-kind services
- Conduct necessary stakeholder outreach and keep the public informed
- Create a toolkit and implementation guidelines

## Cost Estimate

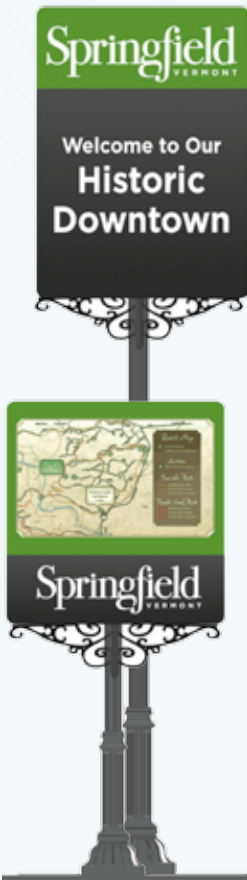
\$15,000-\$40,000

## Project Champions

Laura Parette | [laura@lauraparette.com](mailto:laura@lauraparette.com)  
Cindy Lyons | [cindylyons@nelandmark.com](mailto:cindylyons@nelandmark.com)

## Project Sponsor

Revitalizing Waterbury





# Waterbury Arts Center

## Project Description

The Waterbury Arts Center project will provide a self-sustaining anchor for the economic re-development and revitalization by: realizing the vision of Waterbury as a cultural arts destination; strengthening the community through the generation of business, tourism, and multi-disciplinary arts activities; and creating a central support from which the area's existing arts industry can flourish.



### *The Waterbury Arts Center 3-tier process:*

1. A comprehensive arts feasibility study will be conducted to identify both the current economic value and viability, and the cultural enrichment impact, of creating a self-sustaining art center for the community. At the end of this project, Waterbury will have a solid community arts-center base on which to expand its facility and activities as the needs and market evolve.
2. With the foundation of the study's findings, a developmental strategy will be created including optimum location and facility design, phases of development, and establish a business plan for the long-term sustainability of the center.
3. The execution of building both the physical and organizational structure of the arts center.

## Cost Estimate

Feasibility Study: \$75,000  
Development Plan: \$75,000  
Capital: \$5,000,000

## Project Sponsors

MOXIE Productions and Revitalizing Waterbury (Interim sponsors)  
Waterbury Activities and Cultural Center (WACC)  
-in confirmation process at time of printing

**Project Champion:** Monica Callan | 802.371.7400 | [moxie@pshift.com](mailto:moxie@pshift.com)





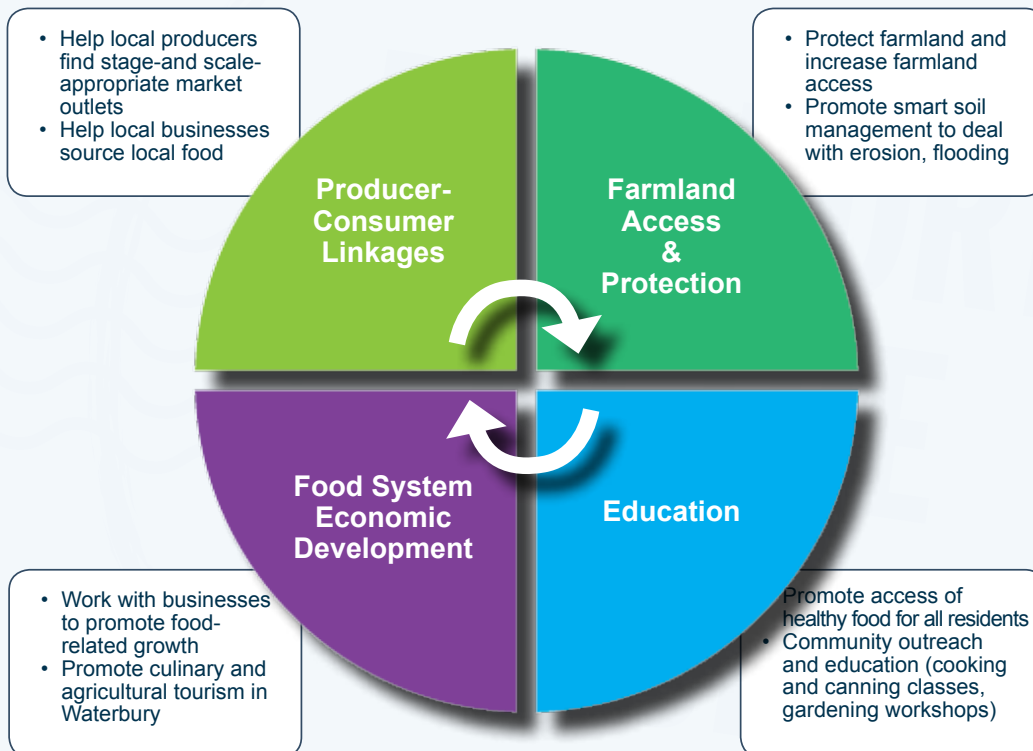
# Food System Development

## Project Description

Hiring a Local Food Coordinator to build and expand Waterbury's farm and food economy will foster agriculture and culinary tourism opportunities, protect farmland and soils, encourage food production and healthy eating, and link local producers and consumers.

## Cost Estimate

Annual cost of \$65,000 for 3 years



## Project Champion

Erica Campbell  
ericacampbellvt@gmail.com

## Project Sponsor

Waterbury-Duxbury Food Council



# Bicycle/Pedestrian System, Welcome Center, and Wayfinding

## Project Description

The development of a bicycle and pedestrian master plan, including wayfinding and public space improvements like uniform signage and information kiosks, will create an effective and economically beneficial system that allows residents and visitors to efficiently and enjoyably travel through town. These improvements will facilitate movement through town, reduce traffic and parking issues, lower greenhouse gas emissions, help residents and workers save on travel expenses, and strengthen local businesses through increased foot traffic along local streets.

### *Bike and Pedestrian Route Improvements*

- Main Street Bike Lanes
- Share the Road (Signage & Pavement Markings)
- Alternative Bike Loop to avoid Main Street traffic
- Additional paths and trail identification and construction
- Adaptation of existing sidewalks and trails for accessibility



Proposed Bicycle/Pedestrian Loop

### *Wayfinding & Public Space Improvements*

- Wayfinding Signage to direct residents and visitors in and around town
- Gateways/Public Space Improvements to give the town a more welcoming entrance/gateway and a places for tourists to orient themselves and plan their visit
- Welcome Kiosk
  - a. "You Are Here" map with walking distances in 5 minute and 10 minute radii
  - b. Points of interest, etc. in Waterbury Village & Waterbury Center
  - c. Community Bulletin Board and other information

## Cost Estimate

Master Plan: \$10,000-\$20,000

Wayfinding: \$50,000-\$60,000

Welcome Center: \$65,000-\$90,000

Capital Road Improvements: TBD

## Project Champion

Kaitlin O'Shea-Healy

kosheahealy@gmail.com

## Project Sponsor

Waterbury in Motion





# Center for Resilient Technology and Development

## Project Description

We will develop a nonprofit regional center for aggregating research and best practices in creating resilient infrastructure and community. The Center will house research, consulting, and training designed to help municipalities, consumers and businesses create resilient infrastructure that can successfully weather the impacts of a changing climate, including disasters. The Center, which will be initially grant-funded but will ultimately be self-sustaining through revenue from its work, will also host a business incubator designed to foster the development of innovative technologies and practices. This will create jobs, foster innovation and establish Waterbury as a leader in managing change.



## Cost Estimate

Start-Up/Seed Money: \$50,000-\$150,000

Center/Incubator Development: \$250,000-\$500,000

Ongoing Annual: \$500,000-\$1,000,000

## Project Champion

Liz Schlegel

802.244.4164

802.279.4695 (cell)

[liz.schlegel@gmail.com](mailto:liz.schlegel@gmail.com)



# Waterbury Community Energy

## Project Description

The Waterbury Community Energy project seeks to provide Waterbury with clean, efficient, affordable, and locally-controlled energy systems. The initiative would build on an effort by Waterbury LEAP to create a town-wide energy inventory, as well as use any relevant municipal planning data to develop a complete picture of Waterbury's energy use. This will help identify areas for potential infrastructure and efficiency upgrades and assess overall suitability for district heating. We would then evaluate two existing energy centers that might serve as a source for distributed district energy -- the energy plant at the State Office Complex and the Moretown Landfill gas generating plant. We would look at these and any other planned energy projects including those involving renewables, and determine the viability of creating an integrated district energy system that distributes heat and power to businesses, residences and institutional buildings in the Waterbury Village downtown.



## Cost Estimate

Feasibility Study: \$150,000

Co-Coordinator

(9-12 month engagement): \$70,000

## Project Sponsor

Green Lantern Development

## Project Champions

Katherine Vose | [maxwellpartners@comcast.net](mailto:maxwellpartners@comcast.net)

James Jennings | [james@javahill.com](mailto:james@javahill.com)

Luke Shullenberger | [lukes@greenlanterndevelopment.com](mailto:lukes@greenlanterndevelopment.com)



# Create Sustainable Transportation System

## Project Description

The development of a town-wide carpooling, carsharing, and vanpooling program, accompanied by increased mass transit opportunities, will enhance Waterbury's economic vitality and substantially increase the quality of life for those who live and work in here. The program will help facilitate movement through town, reduce traffic and parking issues, lower greenhouse gas emissions, and help continue local efforts to develop community connections.

## Enhanced Mass Transit

- Analyze travel patterns in and out of Waterbury
- Analyze current mass transit supply to and from Waterbury
- Meet with mass transit companies to discuss the data and identify potential new routes and services
- Consider having real-time vehicle GPS data so arrivals and departures are trackable on-line



## Carpooling/Carsharing Program

- Determine current needs, obstacles, and challenges related to carpooling/ carsharing
- Select a web-based matching system so local residents and employees can match with other riders 24/7
- Identify incentives that will help people change their behavior and conduct periodic contests
- Communicate benefits of carpooling, cost savings, and incentives regularly
- Determine current needs, obstacles, and challenges related to students riding the bus
- Research successes at other schools in New England in expanding bus ridership
- Determine the incentives and programs that would be most effective in increasing ridership

## Cost Estimate

\$52,000 (technical assistance) + Capital

## Project Sponsor

Waterbury LEAP

**Project Champion:** Duncan McDougall | [duncan@clifonline.org](mailto:duncan@clifonline.org)



# Coordinate Health Services and Childcare/Preschool Relocation

## Project Description

Tropical Storm Irene exacerbated certain pre-existing health and human services needs in the community and also created new challenges. These include outreach services for mental health, child care and preschool education, eldercare and other at-risk groups. As we rebuild our community, we are presented with the opportunity to understand the needs of our most vulnerable populations and design an environment that supports those needs.

Needs regarding mental health services and eldercare are not yet quantified. Starting with a study to measure those needs and determine how to best incorporate serving those needs in the community would be beneficial. As a result of the flood, three childcare and/or preschool providers were displaced. A small Waterbury home-based child care remains in temporary space in a downtown church and likely will return to its original location when reconstruction is completed. That operator's main need is replacing some equipment and supplies. The Learning Ladder preschool in Duxbury recently returned to its original location but reconstruction is not complete. It still needs playground safety items, some equipment and supplies including telephones. The non-profit child care center and preschool, Hunger Mountain Children's Center, was displaced from its state-owned building at 123 South Main Street and remains in temporary space in a church on Route 100 in Waterbury Center. After exploring a variety of alternate locations, HMCC has expressed interest in purchasing its former location to officials at the state of Vermont's Buildings and General Services agency as the state considers the future of the State Office Complex. HMCC also has expressed interest in the adjacent building at 121 S. Main St. as a possible location to renovate and expand to meet future needs.

## Cost Estimate

\$50,000 for consulting work on health services and eldercare; \$100,000 for renovations and improvements at the three child care/preschool sites to re-establish those operations; cost for HMCC to acquire real estate is unknown at this time.

## Project Champion (Childcare)

Lisa Scagliotti  
lscagliotti@comcast.net

## Project Sponsor (Childcare)

Hunger Mountain Childcare





# Affordable Housing Development

## Project Description

Waterbury was one of the towns most heavily impacted by flooding as a result of Tropical Storm Irene. There is a significant need for affordable housing in the Waterbury area. The possibility of acquiring buildings from the State, located in the State Complex, could be an exciting opportunity to help meet some of the housing needs of the community. Wasson Hall, at the North Entrance, and Ladd Hall, at the South Entrance could accommodate a number of apartments. Additional affordable apartments, mobile homes, and single family homes are needed in Waterbury. Work must continue in support of and in conjunction with ReBuild Waterbury to coordinate and facilitate the delivery of resources, financing tools, and technical assistance to improve the safety, energy efficiency, and quality of existing substandard housing both in mobile home parks and on owned land.

## Cost Estimate

Capital costs estimated at \$ 8 million for Stanley

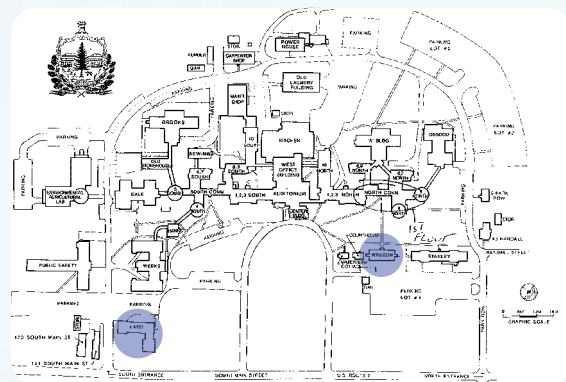
Capital costs estimated at \$3 million for Wasson

## Project Sponsor

Central Vermont Community Land Trust (CVCLT)

## Project Champion

Alison Friedkin  
802.476.4493 x214  
afriedkin@cvclt.org



Vermont State Office Complex: Wasson Hall and Ladd Hall



# ReBuild Waterbury

## About ReBuild Waterbury

ReBuild Waterbury formed as a result of the devastating flooding from Tropical Storm Irene. In the days after the storm, Waterbury Town and Village officials, together with hundreds of volunteers, worked tirelessly to respond to the immediate needs of the affected residents and business owners. As the emergency needs for safety, food, shelter, clothing and community infrastructure were addressed, it became apparent that a long-term recovery effort would be required to provide assistance, particularly to homeowners. Town and village officials met with Revitalizing Waterbury members to identify a structure that could be created as quickly as possible. From that outreach came ReBuild Waterbury, a long-term recovery project that functions under the auspices of Revitalizing Waterbury, an established 501(c)(3) non-profit organization.

## Project Description

Through the use of case management, volunteer coordination and construction management, ReBuild Waterbury is actively assisting individuals/homeowners in the Waterbury/Duxbury area to return to safe and decent housing. ReBuild volunteers and staff are working with individuals/families to locate alternative permanent housing, to repair and rehabilitate current housing, or to completely demolish and rebuild entire homes. It is also anticipated as spring/summer of 2012 arrives that additional mold/mildew mitigation will need to occur, particularly to those homes that may have “closed up” too soon. Original estimates were that 70 individuals/families would need our assistance; as of March 2012 that number has been reached and therefore, our original estimates will be surpassed by project completion in April 2013.

## Cost Estimate

\$918,000 (\$435,798 has already been raised/committed)

## Project Champions

Theresa Wood | [theresa.wood@comcast.net](mailto:theresa.wood@comcast.net)  
MK Monley | [mkmonley@comcast.net](mailto:mkmonley@comcast.net)  
Chris Nordle | [cnordle@dstkwlaw.com](mailto:cnordle@dstkwlaw.com)

## Project Sponsor

Revitalizing Waterbury







# Emergency Power Program

## Project Description

The purchase and installation of generators at the Thatcher Brook Primary School, Crossett Brook Middle School, Sweet Road Water Well-Field, Wastewater Treatment Plant, and the proposed Municipal Building will enable continuous operation of these critical facilities in the event of power loss.

## Action Steps

- Identify the key locations for generators:
  - a. Thatcher Brook Primary School
  - b. Crossett Brook Middle School
  - c. Sweet Road Well-Field
  - d. Wastewater Treatment Plant
  - e. Proposed Municipal Building
- Determine the appropriate size and fuel source
- Identify potential funding sources
- Secure funding
- Solicit bids for the purchase and installation of generators
- Identify and secure necessary permits
- Install generators



## Cost Estimate

\$465,000

## Project Champion

Don Schneider  
802.224.7195  
dschneider@wdsdvt.net

## Project Sponsor

Town and Village of Waterbury



# Flood Proof Main Sewerage Pump Station

## Project Description

Flood proofing the main sewerage pump station will mitigate damage to the facility from future flooding as well as alleviate economic, environmental, and safety burdens. The project will help provide dependable and reasonably priced sewer rates and permit long-term system improvements.

## Action Steps

- Reinforce existing flood doors, replace gaskets, and rehabilitate closing mechanisms
- Reseal abandoned wall penetrations with grout and a gasketed steel cover
- Replace existing pumps with “dry pit submersible solids handling pumps”



## Cost Estimate

Capital Equipment and Installation: \$149,500

## Project Champion

Alec Tuscany  
802.373.8710  
publicworksdirector@waterburyvt.com

## Project Sponsor

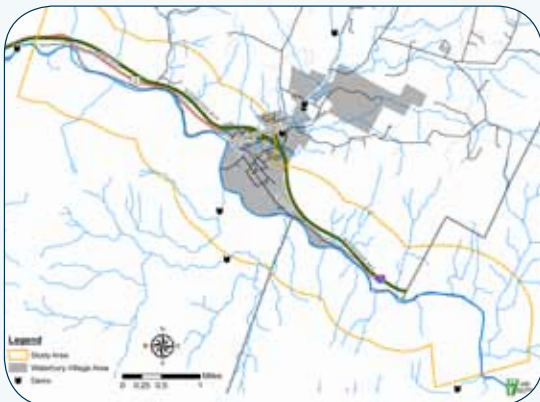
Village of Waterbury



# Waterbury Village Flood Study

## Project Description

The study will analyze flood risk by using computer modeling software to play out “what if” scenarios, like resizing culverts, or elevating infrastructure, to determine impacts on flood vulnerability. A detailed topographic map will reveal areas where flood risk is high. The study will identify solutions to mitigate future vulnerability in areas at risk.



Study Area of Flood Inundation Map and Model

## Project Champions

John Grenier  
802.318.2196  
john@grenierengineering.com

Daniel Currier  
802.229.0389  
currier@cvregion.com

## Project Sponsor

Town and Village of Waterbury

## Action Steps

- Identify existing flood studies, models, and data
- Analyze existing flood studies, models, and data, and determine gaps
- Acquisition of new LiDAR data either by the town or thru another agency partner
- Design a study to fill-in gaps
- Use computer modeling software to play out “what if” scenarios and alternatives regarding Flood Risk, such as:
  - a. The impact of floating debris and ice jams
  - b. The impact of re-sizing bridges and culverts
  - c. The impact of floodplain restoration and other mitigation activities
- Identify solutions to reduce flood vulnerability
- Partner with the Agency of Natural Resources, Central Vermont Regional Planning Commission, United States Geologic Survey, Federal Emergency Management Agency (FEMA), University of Vermont, Friends of the Winooski, and others
- Present findings to municipal leaders and the public with recommendations that promote flood resiliency

## Cost Estimate

\$80,000 - \$150,000



# Dac Rowe Flood-Proofing and Recreation Enhancement

## Project Description

Flood-proofing the infrastructure and expanding and enhancing the recreational facilities at Dac Rowe Field will allow Waterbury to provide more reliable and diverse recreational opportunities. The project will help promote community solidarity and healthier lifestyles and attract economically beneficial recreational tourism.



## Cost Estimate

Study: \$5,000 - \$10,000

## Project Champion

Kane Smart  
802.343.8050  
kanesmart81@hotmail.com

## Project Sponsor

Town of Waterbury



## Action Steps

- Investigate flood resistant alternatives to the existing chain-link fences that form the outfield, the backstops, and dugouts
- Design a site plan that removes the infrastructure from the floodway while facilitating better pedestrian and vehicular circulation
- Add access to recreational activities, like cross country skiing, and enhance existing activities by installing concessions or similar amenities
- Construct improvements that incorporate innovative flood-mitigation and landscape-design principles



# Director of Recreation for Waterbury

## Project Description

A Recreation Director will assist the Town of Waterbury in developing recreational resources to their full potential, as well as advertise Waterbury as a recreation destination for visitors. The project will raise funds to sustain existing resources, as well as grow new ones to benefit the community and visitors alike.



## Cost Estimate

Salary: \$45,000

## Project Champion

Peg O'Neill

oneill.towne@myfairpoint.net

## Project Sponsors

Waterbury Recreation Committee

Town/Village of Waterbury



## Goals of the Recreation Director:

- Assess existing resources and potential for economic development of recreational opportunities
- Develop a three-year strategic Parks & Recreation Plan and a budget that includes outside funding sources
- Implement goals from the proposed Parks & Recreation Master Plan through collaboration with other programs and community volunteers
- Evaluate programs and report findings to all interested parties
- Secure full funding for the position by year three



# Parks and Recreation Master Plan

## Project Description

The Parks and Recreation Master Plan will address the town's recreation needs for the future and establish goals and policies to guide improvements to Waterbury's recreational resources. The Master Plan will include an analysis of the supply, demand, and needs for parks and recreation facilities and services within the Town of Waterbury, and offer a comprehensive assessment of public and private facilities in and around the Waterbury area. The Master Plan will also recommend implementation strategies to help meet the challenges of providing high quality parks and recreational facilities.

## Action Steps

- Meet with the Recreation Committee and Municipal Planner to discuss a scope of work
- Create a committee responsible for project administration
- Identify funding sources and apply for grants
- Compile index of useful information for master plan development
- Solicit cost estimates from qualified consultants
- Hire a consultant to work with project committee on plan development

**Cost Estimate:** \$25,000-\$45,000

**Project Champion:** Becca Washburn | [becca@stowelandtrust.org](mailto:becca@stowelandtrust.org)

**Project Sponsors:** Waterbury Recreation Committee and Town/Village of Waterbury

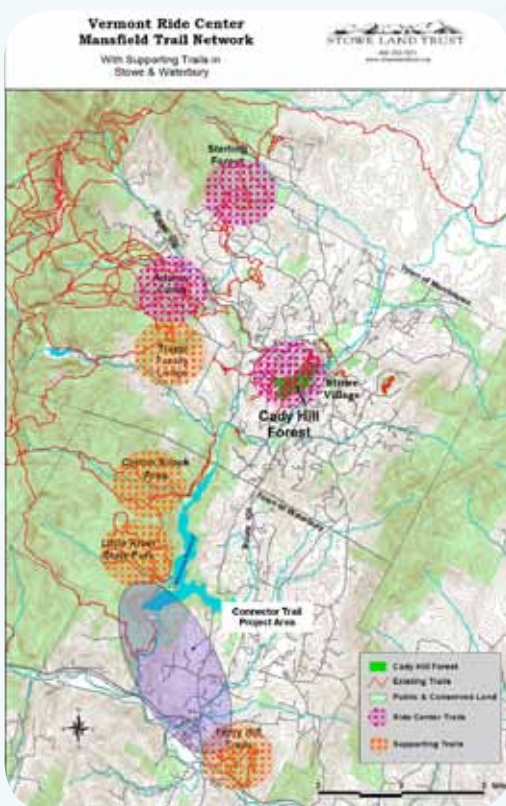




# Little River-Village Connector Trail

## Project Description

The purpose of this project is to study the feasibility of developing a multi-use recreation trail suitable for mountain bikes and pedestrians from Little River State Park to Waterbury Village. Phases II and III of this project involve construction of the connector trail and development of beginner and intermediate mountain bike trails in Little River State Park to establish Waterbury as a destination for mountain biking.



## Cost Estimate

\$25,000-\$30,000

## Project Champion

Jay Provencher

Provencherjnkpro@hotmail.com

## Project Sponsors

Waterbury Recreation Committee

Stowe Mountain Bike Club (SMBC)

## Phase I

- Meet with Stowe Mountain Bike Club (SMBC) and other potential partners to gauge interest and capacity for assistance
- Secure funding for a feasibility study of potential trail corridors
- Hire a consultant to conduct a feasibility study
- Walk potential routes with project partners and landowners
- Develop a project budget

## Phase II

- Research and apply for grants
- Hire a professional trail crew
- Develop project schedule and incorporate volunteers
- Develop a plan for businesses to promote Waterbury and the Ride Center

## Phase III

- Meet with SMBC and the State of Vermont to discuss scope of work and timeframe for trail system development
- Research and secure grant funding to hire trail crews according to timeline